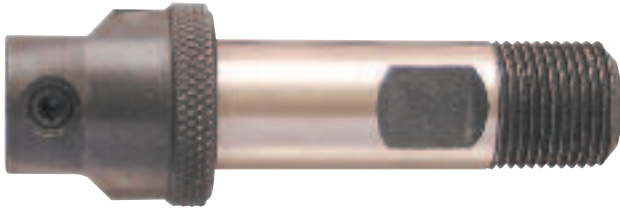


INDEXA-SEIKI Shank Adaptors

KC3 —Adaptors

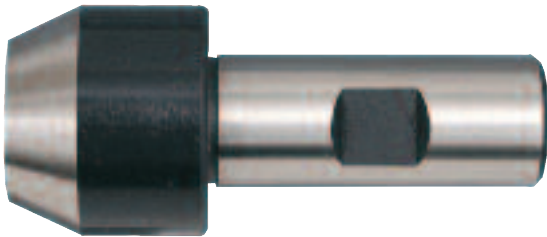
Combination shank. Allows Kennedy and Clarkson throw-away milling cutters to be used with standard 16mm weldon and screwed chucks/collets.



Diameter	Bore	Overall Length	Weight each	Order Code IND-144	Price/1 TB
16mm	6mm	70mm	158g	-3518K	3540.00
16mm	10mm	81mm	158g	-3520K	3840.00

Weldon Shank Adaptors

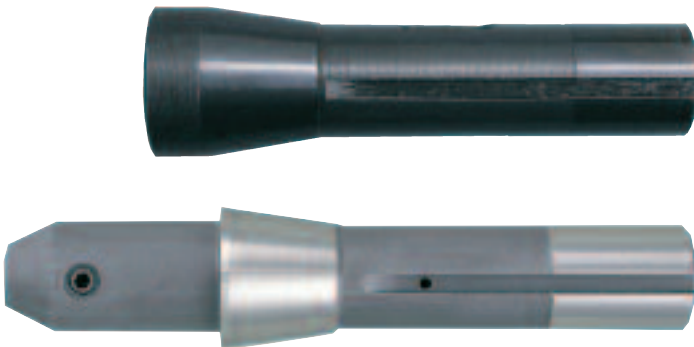
Allows existing weldon shank side lock arbors to hold smaller shank cutters.



Shank	Spigot Diameter	L	D	Weight each	Order Code IND-144	Price/1 TB
SS20	SL10	30	35	225g	-3530K	4850.00

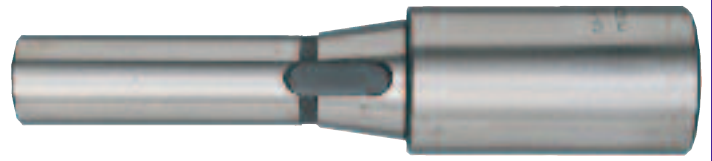
R8 Shank Sidelock Adaptors

For Bridgeport type turret milling machine spindles to accept weldon shank (DIN 1835B) cutters.



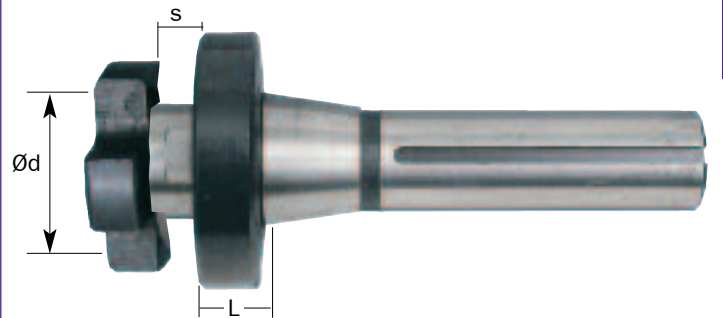
Shank	Bore Size	Weight each	Order Code IND-144	Price/1 TB
R8	SL20	1209g	-3568K	4850.00
R8	SL25	1952g	-3570K	4850.00

R8 Shank Morse Adaptors



Shank	Bore Size	Weight each	Order Code IND-144	Price/1 TB
R8	MT1	400g	-5592K	5500.00
R8	MT2	332g	-5594K	6500.00
R8	MT3	881g	-5596K	7000.00

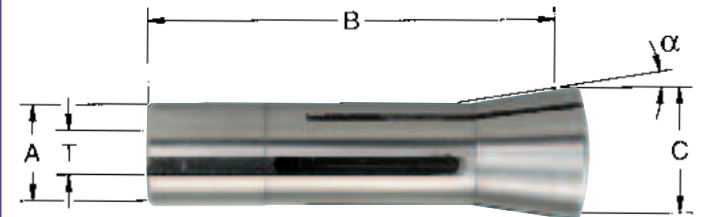
R8 Shank Face Mill Adaptors



Shank	Spigot Size	d	s	Gauge Length (L)	Weight each	Order Code IND-144	Price/1 TB
R8	FM16	16	6	15	512g	-4970K	6500.00
	FM22	22	10	15	696g	-4972K	6500.00
	FM27	27	12	15	741g	-4974K	7500.00
	FM32	32	16	17	938g	-4976K	8500.00

R8 Collets for Bridgeport

Used directly in the machine spindle for general purpose milling and drilling operations, collets have dedicated bores for specific cutter shank sizes.



Dimensions: A = 24.1mm, B = 102.3mm, C = 31.5mm T = 7/16" UNF. Angle: α = 8°25'.

Bore Size	Weight each	Order Code IND-144	Price/1 TB
3.0mm	291g	-3622K	1365.00
6.0mm	298g	-3580K	1365.00
8.0mm	304g	-3630K	1365.00
10.0mm	297g	-3582K	1365.00
11.0mm	299g	-3634K	1365.00
12.0mm	295g	-3584K	1365.00
14.0mm	283g	-3638K	1365.00
16.0mm	275g	-3586K	1365.00
20.0mm	209g	-3588K	1365.00
1/4"	301g	-3590K	1365.00
3/8"	298g	-3592K	1365.00
1/2"	291g	-3594K	1365.00
5/8"	276g	-3596K	1365.00
3/4"	229g	-3598K	1365.00
7/8"	281g	-3700K	1365.00

GROUP 144 SPINDLE NOSE TOOLING

KENNEDY Industrial Drill Chuck Arbors

Precision machined, fully hardened and ground to give maximum surface contact.

Morse Taper Drive to Jacobs Taper



Description	Overall Length	Weight each	Order Code KEN-442	Price/1 TB
No.1 MT x 1JT	90mm	70g	-9110K	226.00
No.1 MT x 2JT	95mm	80g	-9120K	226.00
No.1 MT x 6JT	96mm	100g	-9160K	239.00
No.1 MT x 33JT	95mm	90g	-9190K	416.00
No.2 MT x 1JT	100mm	150g	-9210K	213.00
No.2 MT x 2JT	105mm	160g	-9220K	267.00
No.2 MT x 3JT	115mm	220g	-9230K	247.00
No.2 MT x 4JT	125mm	370g	-9240K	283.00
No.2 MT x 6JT	110mm	180g	-9260K	297.00
No.2 MT x 33JT	110mm	180g	-9290K	227.00
No.3 MT x 1JT	120mm	310g	-9310K	560.00
No.3 MT x 2JT	125mm	330g	-9320K	309.00
No.3 MT x 3JT	135mm	380g	-9330K	316.00
No.3 MT x 4JT	145mm	520g	-9340K	335.00
No.3 MT x 5JT	150mm	680g	-9350K	670.00
No.3 MT x 6JT	130mm	340g	-9360K	335.00
No.3 MT x 33JT	125mm	340g	-9390K	430.00
No.4 MT x 2JT	135mm	700g	-9420K	770.00
No.4 MT x 3JT	160mm	730g	-9430K	770.00
No.4 MT x 4JT	170mm	860g	-9440K	770.00
No.4 MT x 5JT	175mm	1000g	-9450K	1442.00
No.4 MT x 6JT	155mm	690g	-9460K	770.00
No.4 MT x 33JT	155mm	680g	-9490K	770.00
No.5 MT x 3JT	190mm	1700g	-9530K	1906.00
No.5 MT x 5JT	210mm	1900g	-9550K	1906.00

Bridgeport Drive to Jacobs Taper



Description	Overall Length	Weight each	Order Code KEN-442	Price/1 TB
R8 x 1JT	130mm	420g	-9610K	2073.00
R8 x 2JT	135mm	440g	-9620K	2073.00
R8 x 3JT	145mm	510g	-9630K	2073.00
R8 x 6JT	135mm	450g	-9660K	1728.00
R8 x 33JT	135mm	460g	-9690K	1479.00

Morse Taper Drive to Threaded



Description	Overall Length	Weight each	Order Code KEN-442	Price/1 TB
No.1 MT 1/2 x 20	92mm	100g	-1120K	1420.00
No.1 MT 3/8 x 24	95mm	80g	-1380K	1420.00
No.2 MT 1/2 x 20	105mm	170g	-2120K	1685.00
No.2 MT 3/8 x 24	105mm	170g	-2380K	1685.00
No.2 MT 5/8 x 16	105mm	180g	-2580K	1685.00
No.3 MT 1/2 x 20	125mm	360g	-3120K	1863.00
No.3 MT 5/8 x 16	125mm	370g	-3580K	1863.00

KD Type - Morse Taper Shank to Din Taper Arbors

Fully hardened and ground Morse Taper to DIN 228. Chuck taper to DIN 238.



Morse Taper	Chuck Taper	Overall length	Order Code KEN-442	Price/1 TB
No.2 MT	B12	106.5mm	-5220K	178.00
No.2 MT	B16	111.5mm	-5260K	178.00
No.3 MT	B12	125.0mm	-5320K	268.00
No.3 MT	B16	134.0mm	-5360K	268.00
No.4 MT	B16	159.0mm	-5420K	448.00
No.4 MT	B22	176.0mm	-5460K	448.00



Group 440

INDEXA Indexa T-Slot Clamping Kits

Designed to save set up time and solve most T-Slot clamping problems. All Components are manufactured from **S45C (JIS)/CK45 (DIN)** grade non-alloy carbon steel. Heat treated to HRC 28 - 32 and have a manganese phosphate surface finish. Supplied in a robust plastic case.

Contents:

- Engineers Studs (4 off each): 75, 100, 125, 150, 175 and 200mm long.
- Step Blocks (4 off each): 28, 35 and 98mm high.
- Step Clamps (2 off each): 64, 100 and 150mm long.
- Nuts Extension 4 off Flanged 6 off T-slot 6 off.



T-Slot Size	Thread Size	Part Number	Weight each	Order Code IND-425	Price/1 TB
12mm	M10	TK10	9kg	-3610T	9785.00
14mm	M12	TK12	10kg	-3612T	10299.00
16mm	M14	TK14	11kg	-3614T	12500.00
18mm	M16	TK16	14kg	-3616T	16042.00
20mm	M18	TK18	20.5kg	-3618T	19132.00

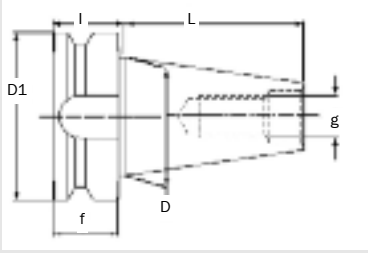


Group 425

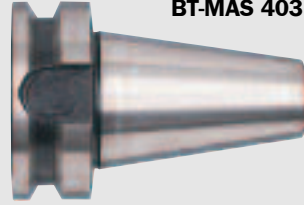
CUTTING TOOLS

INDEXA-SEIKI

BT

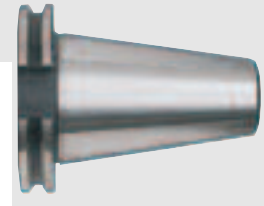
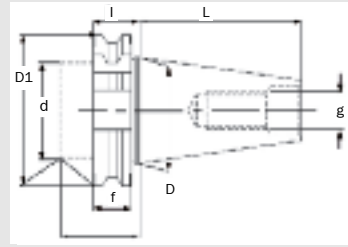


Japanese Standard BT-MAS 403



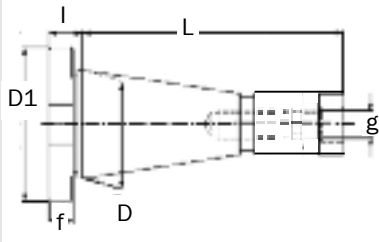
Taper	D	D1	f	g	I	L
30	31.75	46	20	M12	22	48.4
35	38.10	53	22	M12	24	56.5
40	44.45	63	25	M16	27	65.4
45	57.15	85	30	M20	33	82.8
50	69.85	100	35	M24	38	101.8

DIN

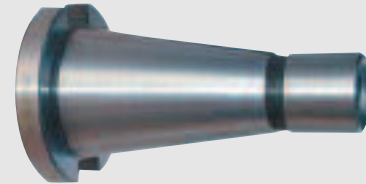


Taper	D	D1	d max	f	g	L	I	l min
30	31.75	50	45	15.9	M12	47.8	19.1	35
40	44.45	63.55	50	15.9	M16	68.4	19.1	35
45	57.15	82.55	63	15.9	M20	82.7	19.1	35
50	69.85	97.5	80	15.9	M24	101.75	19.1	35

ISO Including Quick Change.



ISO Standard ISO R 297-2583 - DIN 2080



Taper	D	D1	f	g	I	L	L1
30	31.75	50	8	M12	9.61	68.39	-
40	44.45	63	10	M16	11.6	93.40	7
45	57.15	80	12	M20	15.2	106.8	-
50	69.85	97.5	12	M24	15.2	126.8	13

Quick Change

Taper	D	D1	L	f	I	g
30	31.75	46.0	69	8.76	10.7	M12
40	44.45	63.5	93	7.98	9.9	M16

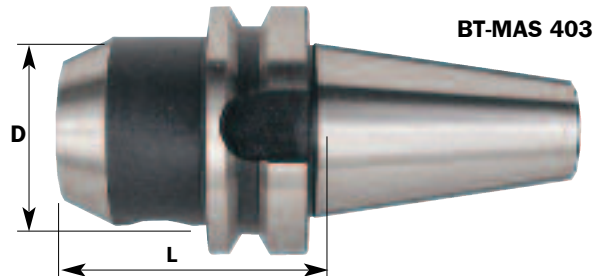
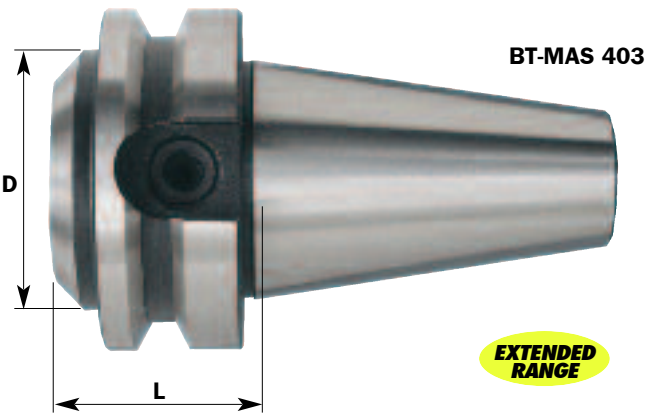
SL - Sidelock Adaptors

Short Length

For weldon shank cutters, adaptors and tapping chucks. Manufactured to stringent quality standards.

Standard Length

For weldon shank cutters, adaptors and tapping chucks. Manufactured to stringent quality standards.



Shank	Spigot Diameter	L	D	Weight each	Order Code IND-144	Price/1 TB
BT40	SL12	40	42	1.04kg	-3449K	5400.00
BT40	SL16	36	48	1.01kg	-3451K	5550.00
BT40	SL20	37	50	1.07kg	-3453K	4320.00
BT40	SL25	60	63	1.58kg	-3455K	4320.00
BT40	SL32	70	72	2.00kg	-3457K	4620.00

Shank	Spigot Diameter	L	D	Weight each	Order Code IND-144	Price/1 TB
BT40	SL20	63	48	817g	-3414K	4680.00
	SL06	50	25	1091g	-3432K	5380.00
	SL08	50	28	1109g	-3440K	5380.00
	SL10	63	35	1234g	-3448K	4200.00
	SL12	63	42	1341g	-3450K	4675.00
BT50	SL16	63	48	1420g	-3452K	3900.00
	SL20	63	52	1471g	-3454K	4200.00
	SL25	90	65	2295g	-3456K	4500.00
	SL32	100	72	2870g	-3458K	4680.00
	SL16	80	48	4299g	-3498K	9500.00
	SL20	80	52	4166g	-3500K	9000.00
	SL25	100	65	4787g	-3502K	9600.00
SL32	105	72	4990g	-3504K	10200.00	

FM - Face Mill Adaptors

From an extensive programme of quality spindle nose tooling, used with an extensive range of face and shell mills.

BT = BT-MAS 403 (See main picture)

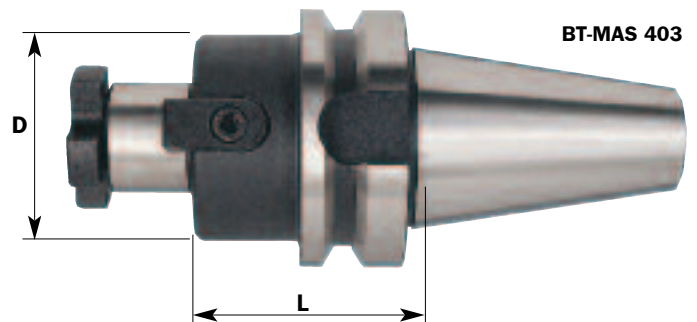
DN = DIN69871/A.....

IS = ISO/DIN 2080/

QC = ISO/DIN 2080 Quick Change.....



Shank	Spigot Diameter	L	D	Weight each	Order Code IND-144	Price/1 TB
DN40	FM22	60	50	1554g	-4610K	12772.00
	FM22	120	40	2167g	-4612K	13493.00
	FM27	60	50	1602g	-4614K	16377.00
	FM27	120	48	2705g	-4616K	18437.00
QC40	FM32	60	78	2326g	-4618K	12875.00
	FM40	60	89	2626g	-4622K	16995.00
	FM22	37	40	1125g	-4810K	12360.00
	FM22	90	40	1845g	-4812K	13493.00
QC40	FM27	37	48	1275g	-4814K	13493.00
	FM32	37	58	1558g	-4818K	14420.00
	FM40	37	70	2025g	-4822K	14420.00



Shank	Spigot Diameter	L	D	Weight each	Order Code IND-144	Price/1 TB
IS50	FM40	40	70	3.6kg	-4850K	14420.00
	FM16	52	36	1.2kg	-4907K	14420.00
	FM22	52	50	1.5kg	-4910K	14420.00
	FM22	120	40	2.2kg	-4912K	15450.00
BT40	FM27	52	50	1.5kg	-4914K	14420.00
	FM27	120	48	2.7kg	-4916K	15450.00
	FM32	52	78	2.2kg	-4918K	14678.00
	FM32	120	58	3.5kg	-4920K	15450.00
BT50	FM40	60	89	2.9kg	-4922K	15450.00
	FM22	65	40	4.1kg	-4934K	16480.00
	FM22	100	40	5.1kg	-4938K	16480.00
	FM27	65	48	4.5kg	-4940K	16995.00
FM40	78	70	5.2kg	-4950K	17510.00	

PRODUCTS ARE ONLY AVAILABLE VIA YOUR DISTRIBUTOR

GROUP 144 SPINDLE NOSE TOOLING

INDEXA-SEIKI ER - Collet Chucks

Europe's most popular collet system. Collapsing collet design can be used for a range of diameters and maintains concentricity for drilling and milling. Long reach options available to give access into deep recesses.

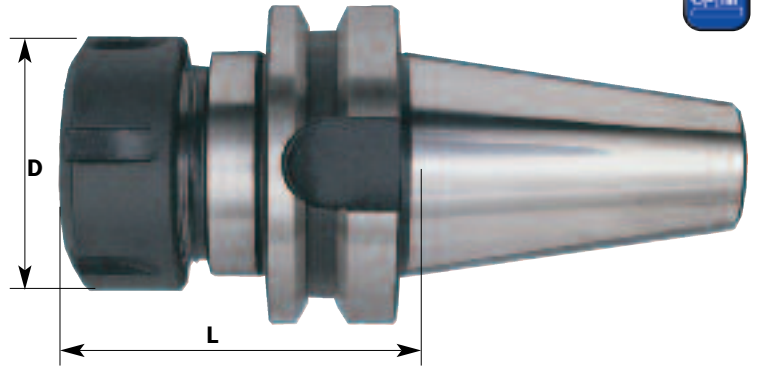
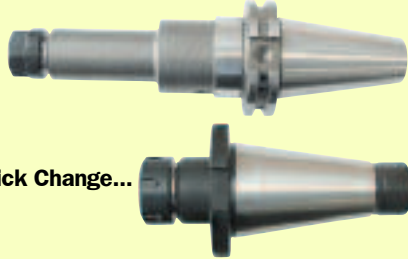


CUTTING TOOLS

BT = BT-MAS 403.....(See main picture)

DN = DIN69871/A.....

**IS = ISO/DIN 2080/
QC = ISO/DIN 2080 Quick Change...**



BT-MAS 403

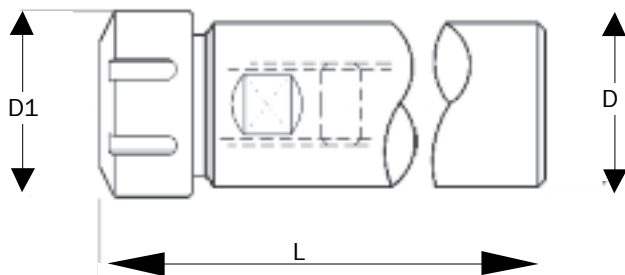
DN = DIN 69871/A

Shank	Collet Diameter	L	D	Weight each	Order Code IND-144	Price/1 TB
DN40	ER16	100	28	929g	-2710K	5500.00
	ER16	150	28	1608g	-2712K	5600.00
	ER25	60	42	1119g	-2714K	6500.00
	ER32	70	50	1253g	-2716K	6750.00
	ER32	130	50	1744g	-2718K	8500.00
	ER40	70	63	1293g	-2720K	9000.00

BT = BT-MAS 403

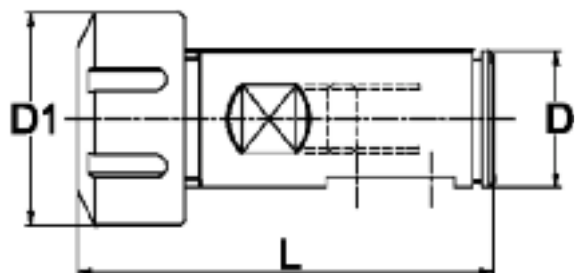
Shank	Collet Diameter	L	D	Weight each	Order Code IND-144	Price/1 TB
BT30	ER16	60	32	539g	-2792K	6500.00
	ER32	60	50	1100g	-2796K	5500.00
	ER16	60	32	1002g	-2798K	4740.00
BT40	ER16	100	28	1240g	-2800K	7072.00
	ER16	150	28	1240g	-2802K	7993.00
	ER25	60	42	1155g	-2804K	5912.00
	ER32	70	50	1299g	-2806K	5912.00
	ER32	130	50	2177g	-2808K	7435.00
	ER40	70	63	1334g	-2810K	5912.00
BT50	ER16	100	28	3827g	-2816K	12600.00
	ER16	150	28	4186g	-2818K	13600.00
	ER32	70	50	3807g	-2832K	8450.00
	ER32	130	50	4664g	-2834K	10943.00
	ER40	80	63	4041g	-2836K	10500.00

Straight Shank - Mini Extension



Product Number	Collet Diameter	D ₁	L	D	Weight each	Order Code IND-144	Price/1 TB
SSE20	ER16	22	160	20	305g	-2880K	8500.00

Straight Shank



Product Number	Collet Diameter	D ₁	L	D	Weight each	Order Code IND-144	Price/1 TB
SS32	ER32	50	098	32	655g	-2850K	6962.00
SS40	ER32	50	118	40	913g	-2860K	7841.00



INDEXA-SEIKI ER Industrial Hook Wrench

For ER8/ER40 collet nuts. Adjustable size, drop forged steel. Single hand adjustment. One spanner will cover 35 - 105 collet nuts. To suit collets: ER 8, 16, 25, 32 and 40. Metric sizes: 35, 50, 60, 70, 80, 90 and 105mm.



Description	Weight each	Order Code IND-140	Price/1 TB
Adjustable	500g	-8100K	2034.00

Spanners & Locknuts

Suitable for all collet chucks including straight shank.



Spanners

Chuck Type	Order Code KEN-580	Price/1 TB
ER16 Mini	-5160K	373.00
ER16	-5300K	390.00
ER25	-5400K	390.00
ER32	-5450K	390.00



ER - Single Angle Collets

Manufactured from hardened and tempered high alloy steel. Conform to **DIN 6499**.

EXTENDED RANGE

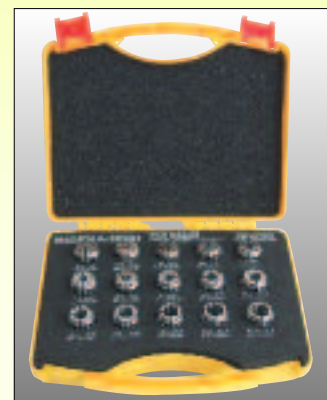
Range mm	Weight each	Order Code IDX-144	Price/1 TB
ER11			
1.00	4g	-2872K	750.00
1.50	5g	-2874K	750.00
2.00	6g	-2876K	750.00
2.50	7g	-2878K	750.00
3.00	8g	-2880K	567.00
3.50	10g	-2882K	567.00
4.00	12g	-2884K	567.00
4.50	15g	-2886K	567.00
5.00	19g	-2888K	567.00
5.50	25g	-2890K	567.00
6.00	28g	-2892K	567.00
6.50	30g	-2894K	567.00
7.00	35g	-2896K	567.00
ER16			
1.0-0.5	26g	-3200K	680.00
2.0-1.0	25g	-3210K	927.00
3.0-2.0	27g	-3220K	927.00
4.0-3.0	28g	-3230K	927.00
5.0-4.0	22g	-3240K	927.00
6.0-5.0	19g	-3250K	927.00
7.0-6.0	19g	-3260K	927.00
8.0-7.0	17g	-3270K	927.00
9.0-8.0	21g	-3280K	927.00
10.0-9.0	15g	-3290K	927.00
ER20			
3.0-2.0	41g	-3312K	729.00
4.0-3.0	40g	-3314K	729.00
5.0-4.0	40g	-3316K	729.00
6.0-5.0	42g	-3318K	729.00
7.0-6.0	44g	-3320K	754.00
8.0-7.0	25g	-3322K	754.00
9.0-8.0	36g	-3324K	773.00
10.0-9.0	36g	-3326K	779.00
11.0-10.0	32g	-3328K	803.00
12.0-11.0	31g	-3330K	834.00
13.0-12.0	25g	-3332K	853.00
ER25			
2.0-1.0	74g	-3400K	1026.00
3.0-2.0	76g	-3410K	1026.00
4.0-3.0	75g	-3420K	1026.00
5.0-4.0	76g	-3430K	1026.00
6.0-5.0	75g	-3440K	1026.00
7.0-6.0	72g	-3450K	1026.00
8.0-7.0	73g	-3460K	1026.00
9.0-8.0	71g	-3470K	1026.00
10.0-9.0	68g	-3480K	1026.00
11.0-10.0	67g	-3490K	1026.00

Range mm	Weight each	Order Code IDX-144	Price/1 TB
ER25 Continued			
12.0-11.0	65g	-3500K	1026.00
13.0-12.0	59g	-3510K	1026.00
14.0-13.0	55g	-3520K	1026.00
15.0-14.0	52g	-3530K	1026.00
16.0-15.0	46g	-3540K	1026.00
ER32			
3.0-2.0	140g	-3700K	1174.00
4.0-3.0	141g	-3710K	1174.00
5.0-4.0	146g	-3720K	1174.00
6.0-5.0	147g	-3730K	1174.00
7.0-6.0	145g	-3740K	1174.00
8.0-7.0	148g	-3750K	1174.00
9.0-8.0	145g	-3760K	1174.00
10.0-9.0	141g	-3770K	1174.00
11.0-10.0	139g	-3780K	1174.00
12.0-11.0	134g	-3790K	1174.00
13.0-12.0	133g	-3800K	1174.00
14.0-13.0	128g	-3810K	1174.00
15.0-14.0	123g	-3820K	1174.00
16.0-15.0	119g	-3830K	1174.00
17.0-16.0	112g	-3840K	1174.00
18.0-17.0	103g	-3850K	1174.00
19.0-18.0	101g	-3860K	1174.00
20.0-19.0	44g	-3870K	1174.00
ER40			
4.0-3.0	252g	-4000K	1205.00
5.0-4.0	268g	-4010K	1205.00
6.0-5.0		-4020K	1205.00
7.0-6.0	263g	-4030K	1205.00
8.0-7.0	274g	-4040K	1205.00
9.0-8.0	261g	-4050K	1205.00
10.0-9.0	278g	-4060K	1205.00
11.0-10.0	276g	-4070K	1205.00
12.0-11.0	274g	-4080K	1205.00
13.0-12.0	268g	-4090K	1205.00
14.0-13.0	263g	-4100K	1205.00
15.0-14.0	258g	-4110K	1205.00
16.0-15.0		-4120K	1205.00
17.0-16.0	248g	-4130K	1205.00
18.0-17.0	242g	-4140K	1205.00
19.0-18.0	238g	-4150K	1205.00
20.0-19.0	224g	-4160K	1205.00
21.0-20.0	216g	-4170K	1205.00
22.0-21.0	207g	-4180K	1205.00
23.0-22.0	194g	-4190K	1205.00
24.0-23.0	186g	-4200K	1205.00
25.0-24.0	176g	-4210K	1205.00
26.0-25.0	165g	-4220K	1205.00

CUTTING TOOLS

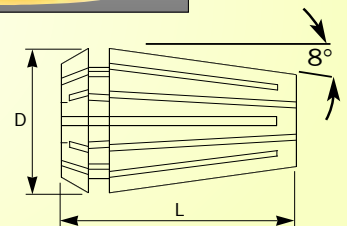
ER - Collet Sets

Manufactured from hardened and tempered high alloy steel. All supplied in hard wearing bench cases. Conform to **DIN 6499**.



Collet Dimensions (mm)

Type	Capacity	D	L
ER16	0.5-10	17.0	27.0
ER20	3.0-13	21.0	31.5
ER25	1.0-16	26.0	35.0
ER32	2.0-20	33.0	40.0
ER40	3.0-26	41.0	46.0



Collet Type	Number of Collets	Range Dia. (mm)	Weight each	Order Code IDX-144	Price/1 TB
ER16	9	1.0 - 10.0	535g	-9010K	6798.00
ER20	11	2.0 - 13.0	637g	-9015K	8652.00
ER25	15	1.0 - 16.0	1207g	-9020K	10506.00
ER32	18	2.0 - 20.0	4.8kg	-9030K	12978.00
ER40	23	3.0 - 26.0	5.5kg	-9040K	20394.00

PRODUCTS ARE ONLY AVAILABLE VIA YOUR DISTRIBUTOR

GROUP 144 SPINDLE NOSE TOOLING

INDEXA-SEIKI Chuck Adaptors

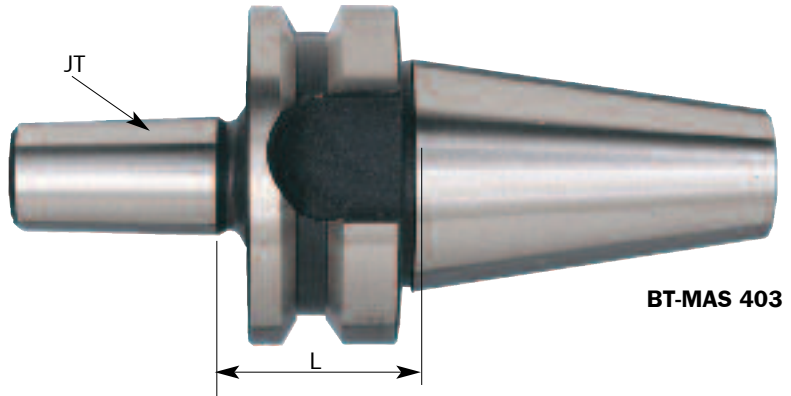


JTA —Jacobs Taper Adaptors - For use with Kennedy, Jacobs, Rohm etc, drill chucks.

BT = BT-MAS 403... (See main picture)

DN = DIN69871/A.....

QC = ISO/DIN 2080 Quick Change.....



BT-MAS 403

Shank	Jacobs Taper	L	Weight each	Order Code IND-144	Price/1 TB
DN40	JT6	40	3366g	-5048K	6500.00
QC30	JT6	21	411g	-5210K	7500.00
QC40	JT33	40	799g	-5244K	8000.00
	JT6	40	985g	-5248K	8000.00

Shank	Jacobs Taper	L	Weight each	Order Code IND-144	Price/1 TB
BT40	JT33	42	1145g	-5444K	6500.00
	JT6	42	1152g	-5448K	6500.00

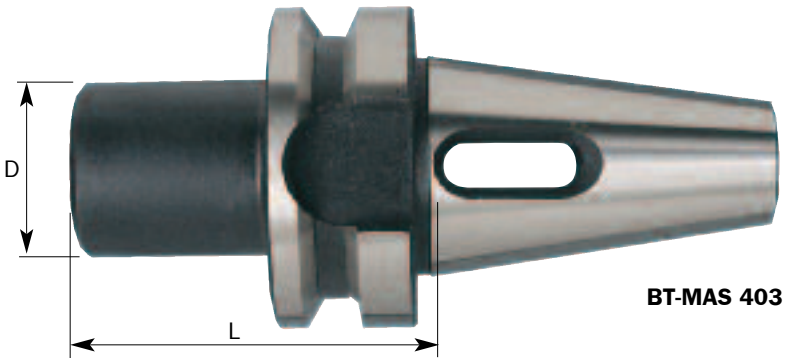
MT-Morse Taper Adaptors

With internal morse taper socket. For use on drilling machines etc. For drills, core drills, reamers etc. Manufactured to stringent quality standards.

BT = BT-MAS 403.....(See main picture)

DN = DIN 69871/A.....

IS = ISO/DIN 2080/
QC = ISO/DIN 2080 Quick Change.....



BT-MAS 403

Shank	Morse Taper	L	D	Weight each	Order Code IND-144	Price/1 TB
DN40	2	50	32	949g	-5626K	6500.00
	3	70	40	1098g	-5630K	6500.00
	4	95	48	1342g	-5634K	7500.00
DN50	3	65	40	3278g	-5674K	9500.00
	4	95	48	3193g	-5680K	9500.00
	5	105	63	3356g	-5684K	10000.00
QC40	2	50	32	882g	-5826K	5500.00
	3	65	40	1008g	-5830K	5500.00
	4	95	48	1304g	-5834K	6500.00

Shank	Morse Taper	L	D	Weight each	Order Code IND-144	Price/1 TB
BT40	1	50	25	1033g	-5922K	7000.00
	2	50	32	1050g	-5926K	7000.00
	3	70	40	1186g	-5930K	7000.00
	4	95	48	1394g	-5934K	7500.00
BT50	2	60	32	3737g	-5968K	9500.00
	3	65	40	3750g	-5974K	9500.00

FREE

SWISS+TECH

Tapping Drill Size (A2 Size)

AVAILABLE ON REQUEST

CAT-849-2188A

Contact your local branch or representative.



FREE

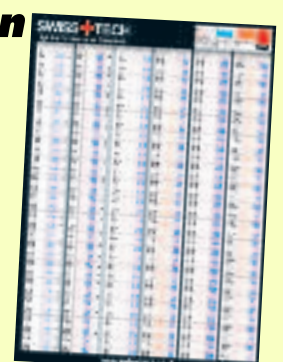
SWISS+TECH

Decimal Conversion Wall Chart (A2 Size)

AVAILABLE ON REQUEST

CAT-849-2189A

Contact your local branch or representative.



CUTTING TOOLS

INDEXA-SEIKI Tapping Head Sets

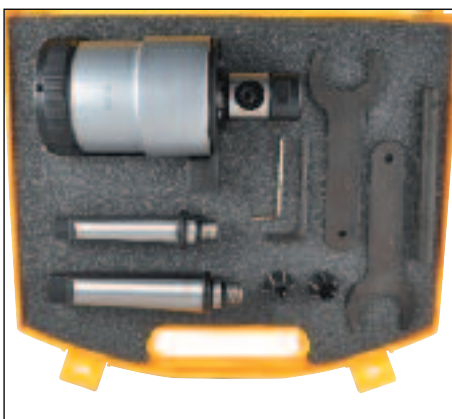
Adjustable torque control protects against tap breakage/overload. Auto-reverse withdraws the tap without reversing the machine spindle. Each set is supplied complete with two rubber flex collets, two Morse arbors, kick bar and wrenches. Suitable for use with ISO, DIN and ANSI taps. These tapping heads are suitable for light and medium duty applications not for production machining. Range capacity is nominal sizes only and is dependent on tap shank dimensions (ISO or DIN).



Model JSN-7
IND- 144-8010K



Model JSN-12
IND- 144-8020K



Model JSN-20
IND- 144-8030K



Model	Range	Morse Taper	Recommended Max. Speed	Reverse Ratio	Body Diameter	Overall Length	Clockwise Compression	Self Feed*	Clockwise Expansion	Weight each	Order Code IND-144	Price/1 TB
JSN-7	M2-7	1 & 3	1500 RPM	01:01.6	52mm	130mm	5.0mm	3.5mm	10.0mm	2.10kg	-8010K	17971.00
JSN-12	M4-12	3 & 4	1000 RPM	01:01.8	75mm	156mm	5.0mm	4.5mm	14.0mm	4.20kg	-8020K	23814.00
JSN-20	M8-20	3 & 4	600 RPM	01:01.7	90mm	205mm	6.0mm	6.0mm	14.0mm	7.00kg	-8030K	25248.00

Flexible Rubber Collet Sets
To suit Indexa-Seiki tapping heads. Supplied as sets of two collets.



Tapping Head	Contact Length	Cone Angle	Outside Diameter	Weight each	Order Code IND-140	Price/1 TB
JSN - 7	12mm	36°	15mm	10g	-9600K	2600.00
JSN - 12	12mm	36°	22mm	20g	-9610K	2600.00
JSN - 20	12mm	36°	26mm	40g	-9620K	2600.00

Arbors

Suitable for	Morse taper to Jacobs taper	Overall Length	Weight Each	Order Code KEN-442	Price/1 TB
JSN-7 & JSN-12	1MT x 6JT	96mm	100g	-9160K	239.00
	2MT x 6JT	110mm	180g	-9260K	297.00
	3MT x 6JT	130mm	340g	-9360K	335.00
JSN-20	4MT x 6JT	155mm	690g	-9460K	770.00
				Order Code IND-140	Price/1 TB
JSN-20	3MT x M20 x 2.5			-9430K	1200.00
	4MT x M20 x 2.5			-9440K	1300.00

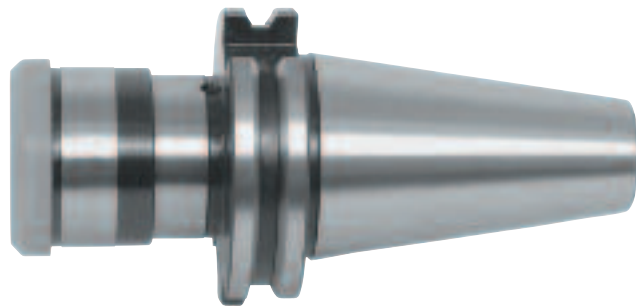
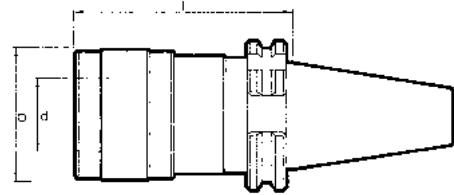
PRODUCTS ARE ONLY AVAILABLE VIA YOUR DISTRIBUTOR

GROUP 144 TAPPING CHUCKS & COLLETS

INDEXA-SEIKI Tapping Chucks - Tension & Compression Type

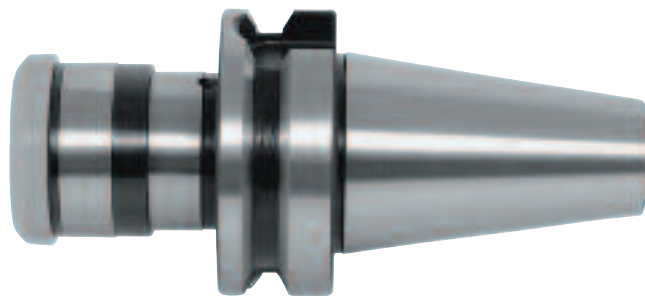
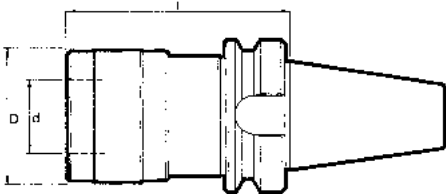
With axial compensation. Suitable for use on boring machines and machining centres.

ISO/DIN 69871-A Taper Shank



Collet Size(d)	Shank Size	Dimensions D	Dimensions l	Tapping Range	Compression Range	Extension Range	Order Code IND-144	Price/1 TB
SC19	DN40	38.0	60	M3-M12	9.0	9.0	-8630K	15500.00
	DN50	38.0	62	M3-M12	9.0	9.0	-8640K	21000.00
SC31	DN40	55.0	100	M6-M20	15.0	15.0	-8632K	17000.00
	DN50	55.0	83	M6-M20	15.0	15.0	-8642K	23000.00

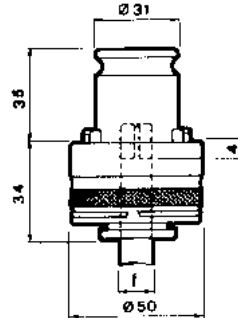
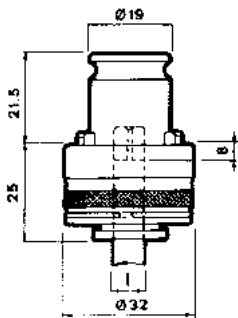
MAS 403 BT Taper Shank



Collet Size(d)	Shank Size	Dimensions D	Dimensions l	Tapping Range	Compression Range	Extension Range	Order Code IND-144	Price/1 TB
SC19	BT40	38.0	68	M3-M12	9.0	9.0	-8610K	14000.00
	BT50	38.0	80	M3-M12	15.0	15.0	-8620K	24500.00
SC31	BT40	55.0	93	M6-M20	15.0	15.0	-8612K	19500.00
	BT50	55.0	102	M6-M20	15.0	15.0	-8622K	29600.00

Tapping Collets

Slipping clutch type. To suit tension and compression type tapping chucks shown above.



Size (d)	For DIN Taps				Dimensions		Order Code	Price/1
SC19/1	352	371	374	376	Shank	A/F	IND-144	TB
335	M3	M3			3.5	2.7	-9230K	4100.00
445	M4	M4			4.5	3.4	-9232K	4100.00
645			M6	M6	4.5	3.4	-9234K	4100.00
56	M5	M5			6.0	4.9	-9220K	4100.00
6649	M6	M6			6.0	4.9	-9238K	4100.00
86	M8		M8	M8	6.0	4.9	-9222K	4100.00
88		M8			8.0	6.2	-9224K	4100.00
997		M9			9.0	7.0	-9236K	4100.00
107	M10		M10	M10	7.0	5.5	-9226K	4100.00
1010		M10			10.0	8.0	-9280K	4250.00
11862	M11		M11	M11	8.0	6.2	-9240K	4100.00
129	M12		M12	M12	9.0	7.0	-9228K	4100.00

Size (d)	For ISO 529 Taps				Dimensions		Order Code	Price/1
SC19/1	Metric	UNC/UNF	BSW/BSF	BA/BSP	Shank	A/F	IND-144	TB
3315	M3	4 / 5	1/8"	5BA	3.15	2.50	-9274K	4250.00
0044	M4		5/32"		4.00	3.15	-9260K	4250.00
0046	M4.5	8	1/4"	3BA	4.50	3.55	-9262K	4250.00
55	M5	10	3/16"	2BA	5.00	4.00	-9270K	4250.00
0053	M5.5	12	7/32"	1BA	5.60	4.50	-9268K	4250.00
663	M6	1/4"	1/4"	OBA	6.30	5.00	-9272K	4250.00
0082	M8	5/16"	5/16"		8.00	6.30	-9264K	4250.00
1010	M10	3/8"	3/8"		10.00	8.00	-9280K	4250.00
0121	M12	1/2"	1/2"		9.00	7.10	-9266K	4250.00

Size (d)	For DIN Taps				Dimensions		Order Code	Price/1
SC31/2	352	371	374	376	Shank	A/F	IND-144	TB
6649	M6				6.0	4.9	-9314K	5600.00
8649	M8		M8	M8	6.0	4.9	-9316K	5600.00
88		M8			8.0	6.2	-9300K	5600.00
997		M9			9.0	7.0	-9306K	5600.00
107	M10		M10	M10	7.0	5.5	-9302K	5600.00
1010		M10			10.0	8.0	-9360K	5600.00
11862	M11		M11	M11	8.0	6.2	-9318K	5600.00
129	M12		M12	M12	9.0	7.0	-9304K	5600.00
1411	M14		M14	M14	11.0	9.0	-9308K	5600.00
1612	M16		M16	M16	12.0	9.0	-9310K	5600.00
181411	M18		M18	M18	14.0	11.0	-9320K	5600.00
2016	M20		M20	M20	16.0	12.0	-9312K	5600.00

Size (d)	For ISO 529 Taps				Dimensions		Order Code	Price/1
SC31/2	Metric	UNC/UNF	BSW/BSF	BA/BSP	Shank	A/F	IND-144	TB
663	M6	1/4"	1/4"	OBA	6.3	5.0	-9346K	5750.00
0082	M8	5/16"	5/16"		8.0	6.3	-9340K	5750.00
1010	M10	3/8"	3/8"		10.0	8.0	-9360K	5600.00
0121	M12	1/2"	1/2"		9.0	7.1	-9344K	5750.00
14112	M14	9/16"	9/16"		11.2	9.0	-9352K	5750.00
16125	M16	5/8"	5/8"		12.5	10.0	-9354K	5750.00
1814112	M18				14.0	11.2	-9356K	5750.00
2014	M20	3/4"	3/4"		14.0	11.2	-9348K	5750.00
2216	M22	7/8"	7/8"		16.0	12.5	-9350K	5750.00
001814	M24	1"	1"		18.0	14.0	-9342K	5750.00

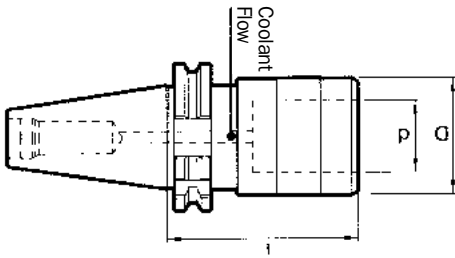




INDEXA-SEIKI Tapping Chucks - Rigid Type (No Compression)

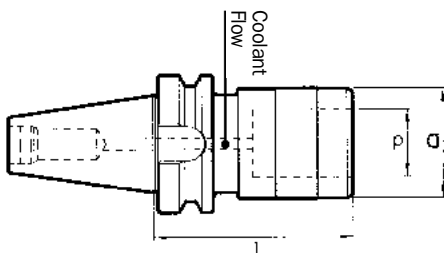
With through coolant. Suitable for use on CNC machines set up for rigid tapping.

ISO/DIN 69871-A Taper Shank



Collet Size (d)	Shank Size	Dimensions		Tapping Range	Order Code IND-144	Price/1 TB
SC19	DN40	33.0	59	M3-M12	-8530K	10500.00
	DN50	33.0	75	M3-M12	-8540K	13600.00
SC31	DN40	50.0	86	M6-M20	-8532K	10500.00
	DN50	50.0	98	M6-M20	-8542K	14500.00

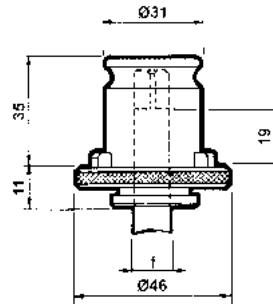
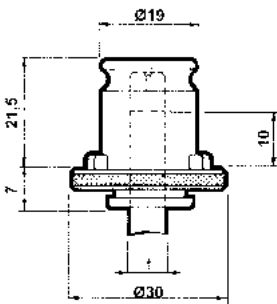
MAS 403 BT Taper Shank



Collet Size (d)	Shank Size	Dimensions		Tapping Range	Order Code IND-144	Price/1 TB
SC19	BT40	33.0	67	M3-M12	-8510K	12500.00
	BT50	33.0	78	M3-M12	-8520K	16500.00
SC31	BT40	50.0	90	M6-M20	-8512K	13500.00
	BT50	50.0	101	M6-M20	-8522K	16500.00

Tapping Collets

Rigid type. To suit Rigid Type tapping chucks shown above.



Size (d)	For DIN Taps				Dimensions		Order Code	Price/1
SC19/11	352	371	374	376	Shank	A/F	IND-144	TB
3527	M3	M3	M5	M5	3.5	2.7	-9108K	1545.00
4534	M4	M4			4.5	3.4	-9110K	1545.00
649	M5-M8	M5-M6	M8	M8	6.0	4.9	-9102K	1545.00
862	M8	M11	M11		8.0	6.2	-9106K	1545.00
755	M10	M7	M10	M10	7.0	5.5	-9104K	1545.00
97	M12	M9	M12	M12	9.0	7.0	-9100K	1545.00
108		M10			10.0	8.0	-9140K	1545.00

Size (d)	For ISO 529 Taps				Dimensions		Order Code	Price/1
SC19/11	Metric	UNC/UNF	BSW/BSF	BA	Shank	A/F	IND-144	TB
31525	M3	4/5	1/8"	5BA	3.15	2.50	-9132K	1700.00
0044	M4		5/32"		4.00	3.15	-9120K	1700.00
0046	M4.5	8		3BA	4.50	3.55	-9122K	1700.00
54	M5	10	3/16"	2BA	5.00	4.00	-9128K	1700.00
635	M6	1/4"	1/4"	OBA	6.30	5.00	-9130K	1700.00
0082	M8/M11	5/16"/7/16"	5/16"/7/16"		8.00	6.30	-9124K	1700.00
0121	M9/M12	1/2"	1/2"		9.00	7.10	-9126K	1700.00
108	M10	3/8"	3/8"		10.00	8.00	-9140K	1545.00

Size (d)	For DIN Taps				Dimensions		Order Code	Price/1
SC31/12	352	371	374	376	Shank	A/F	IND-144	TB
649	M5-M8	M5-M6	M8	M8	6.0	4.9	-9166K	2500.00
862	M11	M8	M11	M11	8.0	6.2	-9170K	2500.00
97	M12	M9	M12	M12	9.0	7.0	-9160K	2500.00
755	M10		M10	M10	7.0	5.5	-9188K	2500.00
108		M10			10.0	8.0	-9200K	2500.00
119	M14		M14	M14	11.0	9.0	-9162K	2500.00
129	M16		M16	M16	12.0	9.0	-9164K	2500.00
1411	M18		M18	M18	14.0	11.0	-9172K	2500.00
1612	M20		M20	M20	16.0	12.0	-9174K	2500.00

Size (d)	For ISO 529 Taps				Dimensions		Order Code	Price/1
SC31/12	Metric	UNC/UNF	BSW/BSF	BA/BSP	Shank	A/F	IND-144	TB
635	M6	1/4"	1/4"	OBA	6.3	5.0	-9184K	2500.00
755	M7				7.0	5.5	-9186K	2500.00
0082	M8/M11	5/16"/7/16"	5/16"/7/16"	1/8" BSP	8.0	6.3	-9180K	2500.00
0121	M9/M12	1/2"	1/2"		9.0	7.1	-9182K	2500.00
108	M10	3/8"	3/8"	1/4" BSP	10.0	8.0	-9200K	2500.00
1129	M14	9/16"	9/16"		11.2	9.0	-9188K	2500.00
12510	M16	5/8"	5/8"	3/8" BSP	12.5	10.0	-9192K	2500.00
14112	M18/M20	3/4"	3/4"		14.0	11.2	-9194K	2500.00
16125	M22	7/8"	7/8"		16.0	12.5	-9196K	2500.00
1814	M24	1"	1"	5/8" BSP	18.0	14.0	-9190K	2500.00

PRODUCTS ARE ONLY AVAILABLE VIA YOUR DISTRIBUTOR