



Mini Milling/ Drilling Machine

A must for model makers. Bench mounted, this milling/drilling machine has a spindle rotation of up to 45°, making it a very capable tool. An assortment of useful accessories are available (see list). This versatile tool has been manufactured to meet European Machinery Directive 98/37/EC and is both CE and RoSH compliant.

Specifications:

Swing over bed: 180mm.

Drilling capacity: 13mm.

End milling capacity: 16mm.

Face milling capacity: 30mm.

Headstock

travel (Z): 180mm.

Cross axis: 100mm.

Longitudinal axis: 220mm.

Spindle rotary angle: ±45°.

Output power: 350W.

Spindle speed:

Low range

0 - 1100rpm ±10%.

High range

0 - 2500rpm ±10%.

Spindle taper: MT#3.

T-slot: 12mm.

Net/gross weight:

50/68kg.

Packing size:

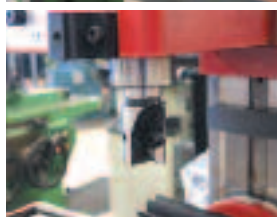
540 x 500

x 760mm.



FOR DIY USE
Not warranted for
Industrial Use

Model Number	Volts	Motor	Order Code	Price/1 TB
01490	240	350W (¾hp)	OSA-271 -5500K	41820.00

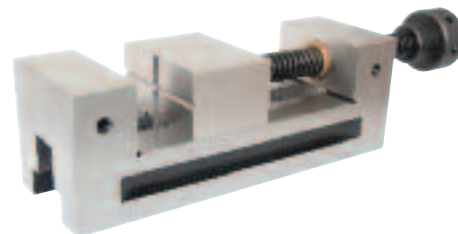


Toolmaker's Vices

Made from alloy steel with a quick release mechanism and knurled grip handle. For use with mini milling/drilling machines.

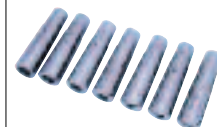
Jaw dimensions (W x O x H):

100 x 85 x 28mm.



Jaw Dimension Width x Opening x Height	Order Code OSA-280	Offer Price/1
100 x 85 x 28mm	-2410A	4927.00

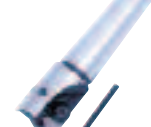
10126



10037



10046



Product Number	Description	Order Code OSA-280	Price/1 TB
10126	3MT Direct Drive Collet Set	-2411A	5865.00
10037	3MT Double Angle Collet Set	-2412A	11144.00
10046	3MT Indexable Milling Cutter	-2413A	4868.00
—	Chuck Guard Assembly	-2414A	428.00

Mini Metalworking Lathe

This little gem is ideal for model-making etc. Supplied with a self-centring three jaw chuck, four-way tool post, swarf tray, rear splash guard, emergency stop button and chuck guard. A variety of useful accessories are available (see list). Manufactured to meet European Machinery Directive 98/37/EC and is both CE and RoSH compliant.

Specifications:

Swing over bed: 180mm.

Distance between centres: 300mm.

Hole through spindle: 20mm.

Spindle taper: MT#3.

Tailstock taper: MT#2.

Spindle speed:

Low range: 0 - 1100rpm ±10%.

High range: 0 - 2500rpm ±10%.

Output power: 250W.

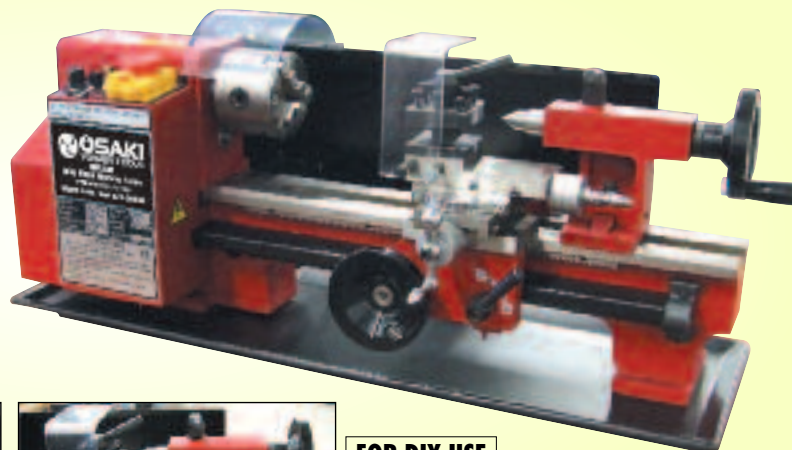
Range of threads: metric 0.4 - 2.00mm

(10 thread pitches) or inch 12 - 52 TP

(8 thread pitches).

Net/gross weight: 37/40kg.

Packing size: 770 x 330 x 330mm.



FOR DIY USE
Not warranted for
Industrial Use

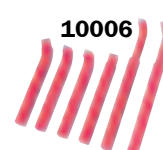
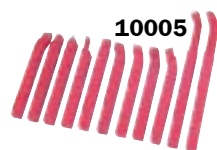


Description	Volts	Motor	Order Code OSA-271	Price/1 TB
Mini Lathe	240	250W	-5000K	40800.00

Optional Accessories

Supplied Separately

Product Number	Description	Order Code OSA-280	Price/1 TB
10007	160mm Diameter Face Plate	-2400A	1455.00
10007A	Clamping Kit for Face Plate	-2401A	782.00
10010	4 Jaw Chuck (Independent)	-2402A	6215.00
10005	11 Piece Brazed Turning Tool Set	-2403A	2760.00
10006	6 Piece Brazed Turning Tool Set	-2404A	1318.00
10130	Knurling Attachment	-2405A	2640.00
10061	Milling Attachment	-2406A	12024.00
—	Chuck Guard Assembly	-2407A	1179.00



KOBE Bench Pillar Drills

Industry standard Morse Taper specification pillar drills, suitable for workshop and light industrial use with a tilting rise and fall work table, user friendly depth gauge, telescopic chuck guard, integral bit drawer and laser beam target guide for quick positioning of repeat work.

DPB350

This drill has a smooth running 350W motor which provides enough power to drill holes up to 13mm and five speeds for versatility and performance when drilling different materials.

Spindle taper: MT2.

Chuck: 13mm.

Drill capacity: 13mm.

Spindle travel: 50mm.

Speeds: 5.

Speed range: 580 - 2650rpm.

Maximum distance - chuck/table: 250mm.

Maximum distance - spindle to column: 102mm.

Column diameter: 50mm.

Table size: 152 x 170mm.

Complete with side plates: 192 (max 272) x 170mm.

Base size: 320 x 190mm.



DPB350

350
WATT

13 AMP

CLASS 2
LASER



Laser Beam
Target Guide



Multi-Speed



Drill Bit
Storage



Extending
Table



Thumb Wheel
Depth Stop

Model Number	Net Weight	Order Code KBE-271	Price/1 TB
DPB350	24kg	-2030K	9792.00

DPB500

More versatile than its smaller stable mate. A 500W motor provides more power to drill holes up to 16mm with 12 speeds for increased performance when drilling on either the table or base.

Spindle taper: MT2.

Chuck: 16mm.

Drill capacity: 16mm.

Spindle travel: 65mm.

Speeds: 12.

Speed range: 425 - 2545rpm.

Maximum distance - chuck/table: 355mm.

Maximum distance - chuck/base: 465mm.

Maximum distance - spindle to column: 126mm.

Column diameter: 60mm.

Table size: 200 x 200mm.

Complete with side plates: 200 x 340mm.

Base size: 380 x 250mm.



DPB500

500
WATT

13 AMP

CLASS 2
LASER



Group
445

Model Number	Net Weight	Order Code KBE-271	Price/1 TB
DPB500	39.5kg	-2110K	13872.00

Floor Standing Pillar Drill

DPF550

Suitable for industrial use on much larger workpieces. Its 550W motor and 12 speeds which give optimal performance when drilling holes up to 20mm. It also comes with a no-volt auto-release switch which turns off when voltage is removed by power cut etc. This stops the machine from starting up on its own when power is restored. The tilting work table with rise and fall rack and pinion can rotate to the rear of the pillar to accommodate larger workpieces on the base plate.



550
WATT

13 AMP

Spindle taper: MT2.

Chuck: 16mm.

Drill capacity: 20mm.

Spindle travel: 80mm.

Speeds: 12.

Speed range: 200 - 2600rpm.

Maximum distance - chuck/table: 725mm.

Maximum distance - chuck/base: 1220mm.

Maximum distance - spindle to column: 190mm.

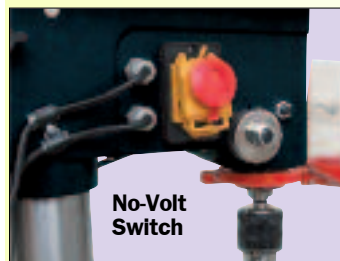
Column diameter: 80mm.

Table size: 300 x 300mm.

Base size: 500 x 300mm.



DPF550



No-Volt
Switch



Group
445

Model Number	Net Weight	Order Code KBE-271	Price/1 TB
DPF550	79kg	-2210K	25092.00

OSAKI 5-Speed Bench Drill

This versatile machine has a smooth running 350W motor for drilling holes up to 13mm. It can be set to five different speeds for versatility and performance when drilling different materials. Complete with a tilting rise and fall work table it operates from a standard 13amp plug.

Power input: 350W.

Motor output: 210W.

Supply voltage: 230V - 50Hz.

Spindle travel: 50mm.

Spindle taper: MT2.

Table size: 156 x 160mm.

Base size: 314 x 200mm.

Column diameter: 46mm.

Drilling speed: 580 - 2650rpm.

Sound power: 75.1dBA.

Sound pressure: 62.1dBA.

Maximum distance from spindle axis to surface of column: 104mm.

Maximum distance from spindle end to surface of table: 200mm.

Maximum distance from spindle end to surface of base: 290mm.

Overall size: 355 x 225 x 580mm.



FOR DIY USE
Not warranted for
Industrial Use

Model Number	Voltage	Net Weight	Order Code OSA-279	Price/1 TB
PDB132	240V	19kg	-9340K	5500.00