

GROUP 440 CHUCKS

KENNEDY Clamping Keyless Drill Chuck

Allows quick tool change, while maintaining high precision and high concentricity. Fully hardened jaws, sleeve and retaining ring for durability and wear resistance. Self-tightening.

EXTENDED RANGE



Capacity (mm)	Mount	Maximum Diameter	Weight each	Order Code KEN-440	Price/1 TB
4.0	1JT	28.0	150g	-3010K	11021.00
8.0	1JT	38.0	440g	-3110K	8755.00
10.0	2JT	43.0	720g	-3220K	9785.00
10.0	33JT	43.0	740g	-3250K	9785.00
13.0	2JT	50.0	1000g	-3320K	12009.00
13.0	6JT	50.0	1000g	-3340K	12009.00
16.0	6JT	55.0	1200g	-3440K	13939.00

Clamping Industrial Keyless Drill Chuck

Fully hardened and ground working parts. The jaws are centre ground for alignment concentricity. Robustly designed for durability and wear resistance in the most arduous of industrial applications on stationary drilling machines. Unsuitable for reversing drills.



Capacity (mm)	Mount	Maximum Diameter	Weight each	Order Code KEN-440	Price/1 TB
10.0	DIN-B12	42.5	670g	-5220K	5514.00
13.0	6JT	46.0	920g	-4240K	7801.00
13.0	1/2" - 20F	46.0	660g	-4280K	4722.00
13.0	DIN-B12	46.0	900g	-5260K	5938.00
13.0	DIN-B16	46.0	940g	-5280K	6646.00
16.0	6JT	51.0	1100g	-4340K	9122.00
16.0	DIN-B16	51.0	1090g	-5300K	7803.00

KOBE Drill Chuck

Fully hardened and ground for durability and wear resistance. Suitable for use with portable power tools.



Capacity (mm)	Mount	Order Code KBE-440	Price/1 TB
1.0 - 10.0	3/8" - 24F	-2010A	617.00
1.5 - 13.0	3/8" - 24F	-2020B	926.00
1.5 - 13.0	1/2" - 20F	-2030C	541.00

Drill Chuck

For use with portable power tools. Female mount. Supplied with key. UNF keyed chuck, hardened and ground for durability and wear resistance. For use with reversible drills. Excellent value for money.

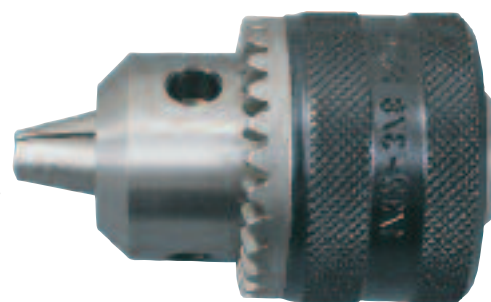


Capacity (mm)	Mount	Weight each	Order Code KBE-440	Price/1 TB
1.0 - 10.0	3/8" - 24F	135g	-1010A	308.00
1.5 - 13.0	3/8" - 24F	270g	-1020B	308.00
1.5 - 13.0	1/2" - 20F	270g	-1030C	308.00

KENNEDY Standard Duty Industrial Keyed Drill Chuck

Fully hardened and ground for durability and wear resistance. Suitable for use with portable power tools. Supplied with key.

Manufactured to DIN 6349.

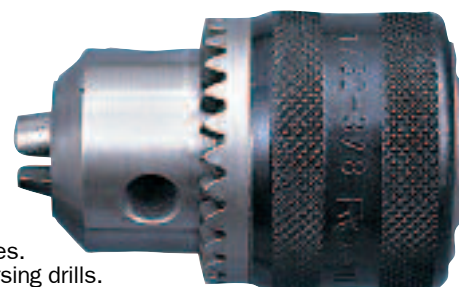


*Primarily for use with hand operated machines

Capacity (mm)	Mounting	Maximum Diameter	Weight each	Order Code KEN-440	Price/1 TB
0.8 - 10.0	3/8" x 24F	34.0	240g	-2360K	1263.00
0.8 - 10.0*	1/2" x 20F	34.0	220g	-2380K	1325.00
1.5 - 13.0	3/8" x 24F	42.7	390g	-2460K	1643.00
1.5 - 13.0	3/8" x 24M	42.7	430g	-2470K	1643.00
1.5 - 13.0	1/2" x 20F	42.7	390g	-2480K	1643.00

Heavy Duty Industrial Keyed Drill Chuck

Fully hardened and ground working parts. The jaws are centre ground for alignment and concentricity. Key holes and teeth are fully hardened for durability and wear resistance. To correctly tighten your keyed drill chuck use all key holes in turn to guarantee even pressure and maximum grip. Suitable for use on machine tools and all types of industrial power tools. Supplied with key. Manufactured to DIN 6349.



* Primarily for use with hand operated machines.
† Not suitable for reversing drills.

Capacity (mm)	Mounting	Maximum Diameter	Weight each	Order Code KEN-440	Price/1 TB
0.5 - 4	0JT	26.0	110g	-1060K	3193.00
0.5 - 6.5	1JT	30.0	140g	-1110K	2234.00
0.5 - 6.5	3/8"-24F †	30.0	140g	-1160K	2291.00
1.0 - 10.0	2JT	42.7	430g	-1320K	2516.00
1.0 - 10.0*	3/8"-24F †	38.0	270g	-1360K	2516.00
0.8 - 10.0	DIN-B12	42.7	400g	-5020K	2533.00
1.0 - 13.0	6JT	52.0	730g	-1440K	3467.00
1.0 - 13.0	33JT	52.0	740g	-1450K	3049.00
1.5 - 13.0	DIN-B12	52.7	750g	-5060K	2686.00
1.0 - 13.0	DIN-B16	52.7	780g	-5080K	3308.00
1.0 - 16.0	3JT	56.5	970g	-1530K	4442.00
1.5 - 13.0	1/2"-20F	42.8	270g	-4640K	990.00
1.5 - 13.0	3/8"-24F †	42.5	420g	-1460K	3111.00
1.5 - 13.0	1/2"-20F †	46.0	530g	-1480K	3111.00
3.0 - 16.0	DIN-B16	56.5	890g	-5100K	3817.00
3.0 - 16.0*	1/2"-20F †	50.0	610g	-1580K	3477.00
5.0 - 20.0	3JT	65.0	1300g	-1630K	5986.00
5.0 - 20.0	DIN-B22	65.0	1335g	-5120K	6503.00

Keyless Drill Chuck

Designed for use on cordless screwdrivers, cordless and corded drills. Unique gripping mechanism engages automatically when tightened. Fully hardened and ground jaws protect against work surface abrasion. Through drilled for use on reversible drills.



Capacity (mm)	Mount	Order Code KEN-440	Price/1 TB
1.5 - 13	1/2" - 20F	-4740K	2234.00
1.5 - 13	3/8" - 24F	-4760K	2234.00