

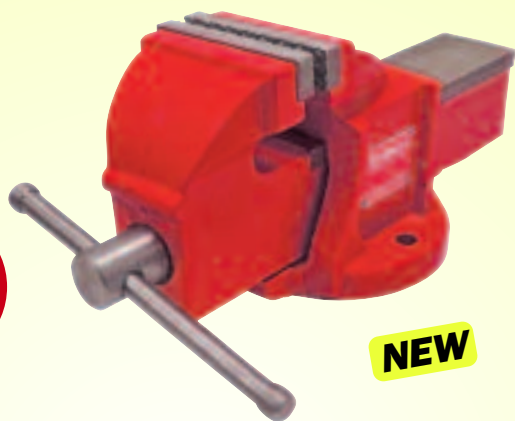
GROUP 445 BENCH VICES

KENNEDY Engineer's Vice

Manufactured from the highest quality castings with precision cut screw mechanisms and precision machined jaws. Suitable for workshop, automotive and engineering use.



Do Not Strike With A Hammer

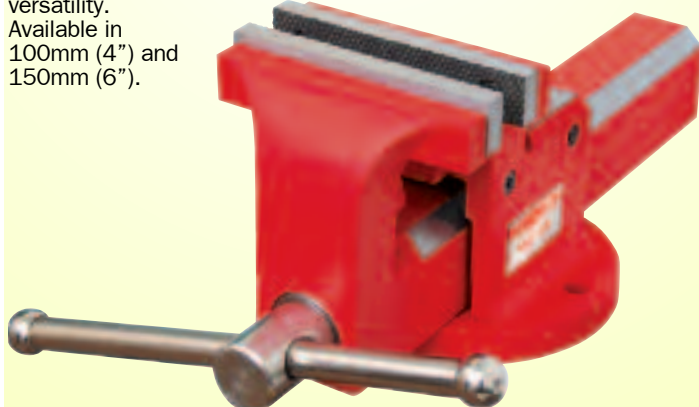


NEW

Model Number	Opening (mm)	Jaw Width (mm)	Weight each	Order Code KEN-445	Price/1 TB
KECV75	100 (4")	75 (3")	4.50kg	-0230K	2650.00
KECV100	140 (5½")	100 (4")	9.50kg	-0240K	3150.00
KECV125	170 (6¾")	125 (5")	18.0kg	-0250K	4400.00
KECV150	190 (7½")	150 (6")	25.0kg	-0260K	6200.00

KENNEDY PROFESSIONAL Steel Bench Vices

These premium quality bench vices are as good as you get, made from solid steel with replaceable jaws, integral pipe jaws and anvil for versatility. Available in 100mm (4") and 150mm (6").



Model Number	Opening (mm)	Jaw Width (mm)	Order Code KEN-445	Price/1 TB
VBS100	90 (3½")	100 (4")	-0500K	6950.00
VBS150	220 (8¾")	150 (6")	-0540K	9500.00

SENATOR Portable Bench Vice

Lightweight and portable with a swivel base and light duty anvil. Ideal for model makers, DIY and light industrial use. Can be fitted to any convenient work surface. Solid cast grey iron body with steel guide rods and main screw.

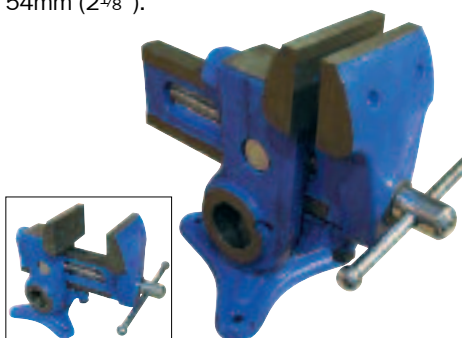


Opening (mm)	Jaw Width	Weight each	Order Code SEN-445	Price/1 TB
70 (2¾")	60	2.8kg	-0600K	979.00

Universal Vice

Can be bench mounted either vertically or horizontally, and on either side. Unique design permits the vice to rotate a full 360° then self-lock when jaws are tightened.

Jaw height:
54mm (2⅛").



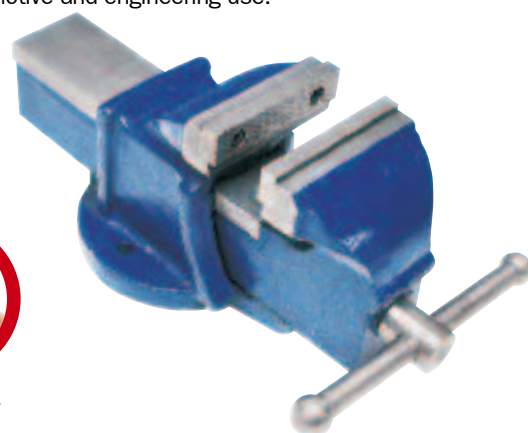
Opening (mm)	Jaw Width	Weight each	Order Code SEN-445	Price/1 TB
125 (5")	90 (3½")	8.2kg	-4050K	3089.00

SENATOR Engineer's Vice

Manufactured from the highest quality castings with precision cut screw mechanisms and precision machined jaws. Suitable for workshop, automotive and engineering use.



Do Not Strike With A Hammer



Opening (mm)	Jaw Width (mm)	Weight each	Order Code SEN-445	Price/1 TB
100 (4")	75 (3")	9.2kg	-1030K	1700.00
140 (5½")	100 (4")	9.5kg	-1040K	2421.00
170 (6½")	125 (5")	18.0kg	-1050K	4119.00
190 (7½")	150 (6")	27.0kg	-1060K	4275.00

Workshop Vice

American pattern bench mounting, steel vice with anvil suitable for workshop, garage and machine-shop use. Fixed base directly mounts onto work bench. Cast iron body with steel jaws and a cross drilled threaded handle with adjustable T-bar for extra leverage.



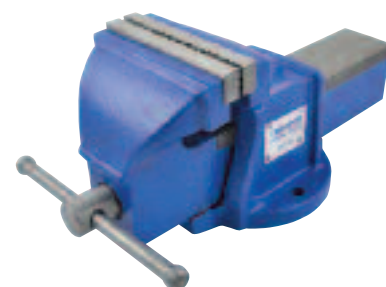
Applicable to 6" version

Opening (mm)	Jaw Width (mm)	Weight each	Order Code SEN-445	Price/1 TB
145 (5¾")	100 (4")	13.5kg	-2040K	2884.00
200 (8")	150 (6")	14.0kg	-2060K	4944.00

Light Duty Bench Vice

For light workshop, engineering and automotive use. Cast iron body with precision cut screw mechanism. The base bolts directly to the work bench surface for stability.

NEW



Opening (mm)	Jaw Width	Weight each	Order Code SEN-445	Price/1 TB
100 (4")	75 (3")	5.5kg	-0510K	2350.00
170 (6½")	125 (5")	11.3kg	-0520K	3200.00
190 (7½")	150 (6")	15.3kg	-0530K	4350.00