

INDEXA Self-Centring Geared Scroll Lathe Chucks

EXTENDED RANGE



Universal. Scrolls are forged, balanced and hardened. Thread flanks are ground on both sides. All models have grease nipples for easy lubrication and are supplied with two sets of solid jaws - internal and external stepped.

Cast Iron 3 Jaw Plain Back Chuck

DIN 6350 (form A).

Three jaw plain back with adaptor recess.

Model 003-204

Rear mounting.

Model 003-274

Front mounting.



Chuck Size (mm)	Through Hole	Weight each	Order Code IND-475		Price/1 TB
			003-204 Rear Mount	003-274 Front Mount	
80	16	1.51kg	-1010K	-	15500.00
80	18	1.70kg	-	-1220K	16000.00
100	20	2.98kg	-1030K	-1230K	16000.00
125	32	4.84kg	-1040K	-1240K	16500.00
160	42	9.78kg	-1060K	-1260K	17000.00
200	55	16.0kg	-1070K	-1270K	18500.00
250	76	27.9kg	-1080K	-1280K	28000.00
315	103	47.5kg	-1090K	-1290K	47000.00

Cast Iron 3 Jaw Plain Back Chuck

DIN 6350 (form A).

Three jaw plain back with adaptor recess.

Model 003-275

Front mounting, reversible jaws.

EXTENDED RANGE



Chuck Size (mm)	Through Hole	Weight each	Order Code IND-475	Price/1 TB
125	32	5.0kg	-1450K	21000.00
160	42	10.8kg	-1460K	24500.00
200	55	17.5kg	-1470K	34000.00
250	76	29.2kg	-1480K	27650.00
315	103	50.0kg	-1490K	41850.00

Steel 3 Jaw Plain Back Chuck

DIN 6350 (form A).

Three jaw plain back with adaptor recess.

Model 003-504

Rear mounting.

NEW



Chuck Size (mm)	Through Hole	Weight each	Order Code IND-475	Price/1 TB
100	20	3.0kg	-1630K	14950.00
125	35	5.0kg	-1640K	18000.00
160	42	8.5kg	-1660K	19000.00
200	55	16.0kg	-1670K	25000.00
250	76	32.0kg	-1680K	33000.00
315	103	50.0kg	-1690K	49500.00

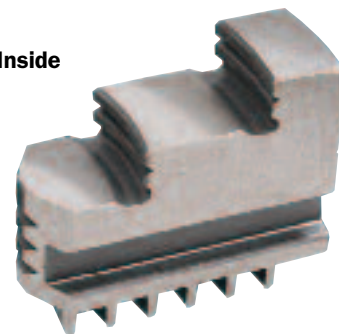
Lathe Chuck Jaws For Self-Centring Lathe Chucks

For self-centring lathe chucks (IND-475) - Indexa 3200 and 3500. Chuck jaws supplied in sets of three.

Hard Jaws

Inside

Fig.2



Size (mm)	Dimensions (mm)								Order Code IND-490	Price/1 TB
	A	B	C	D	E	F	G	H		
100	42	15	32	6	6	7	11	27	-1020K	8500.00
125	51	20	40	8	8	8	13	33.5	-1030K	9800.00
160	70	20	53	8	8	10	19	45	-1050K	11270.00
200	85	25	54	9	10	12	23	57	-1060K	12650.00
250	105	28	63	11	12	14	28	69.5	-1070K	16675.00
315	125	32	73	12.7	12	18	34.5	83	-1080K	18000.00

Lathe Chuck Keys

Supplied as standard with all Indexa lathe chucks manufactured from high quality steel, ground finish body, sliding T-bar and spring return fitted to square drive. Suitable for use with all other makes of square drive adjusting lathe chucks.



Square (AF) Size (mm)	Use With Chucks	Weight each	Order Code IND-490	Price/1 TB
11	160/200	347g	-5930K	2500.00
14	250/315	756g	-5950K	3250.00

PRODUCTS ARE ONLY AVAILABLE VIA YOUR DISTRIBUTOR