

**KENNEDY**  
QUALITY INDUSTRIAL TOOLING**Extending Support Prop**

This lightweight support prop is designed to give a helping hand when fixing overhead panelling and boarding. It has 125 x 80mm flat plates at both ends with a swivel ball joint for ease of use and to avoid damage to panel when pressure is applied. It has four pre-set adjustable height ranges: 1.16 to 2m, 1.46 to 2.3m, 1.76 to 2.6m, 2.06 to 2.9m.



Range	Order Code KEN-512	Price/1 TB
1.6 - 2.9m	-4000K	859.00

**SENATOR**  
QUALITY TOOLING**Plasterer's Hawk**

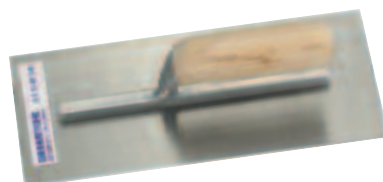
With single screw fixing, zinc plated for corrosion protection. Heavy gauge sheet aluminium platform, highly polished, mirror finish. Suitable for DIY use.



Size (mm)	Weight per 10	Order Code SEN-512	Price/1 TB
265 x 265	6.20kg	-0920K	348.00

**Plasterer's Trowel****Economy**

Single tang, banana shaped handle with six concealed welded rivets to securely fix 'cross ground', hardened and tempered blade.



Size	Weight per 10	Order Code SEN-512	Price/1 TB
280mm (11")	4.60kg	-0100K	531.00

**KENNEDY**  
QUALITY INDUSTRIAL TOOLING**Paint & Plaster Mixer**

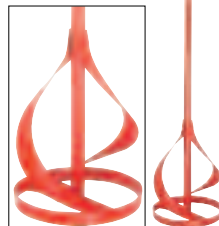
Used for mixing plaster, concrete, filler, epoxy resin, emulsion paint and wallpaper paste. The stirring end should be fully immersed before the shaft is turned.

**Light duty shaft**  
8mm hex.

**Overall length:**  
400mm.

**Heavy duty shaft**  
12mm hex.

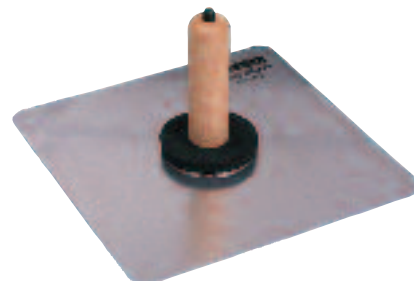
**Overall length:**  
600mm.



Shaft	Weight per 10	Order Code KEN-512	Price/1 TB
Light Duty	680g	-2780K	385.00
Heavy Duty	860g	-2800K	586.00

**KENNEDY**  
PROFESSIONAL**Plasterer's Hawk**

Lightweight scoured aluminium blade to prevent plaster 'slip-off'. Detachable wooden handle with cushioned comfort ring. Designed to reduce discomfort during periods of extended use. Manufactured to the high standards expected by today's trade.



Size (mm)	Weight per 10	Order Code KEN-512	Price/1 TB
300 x 300	7.00kg	-0920K	2307.00

**Plasterer's Trowel**

Aluminium shank single tang banana pattern. Six rivet construction 'cross ground' to prevent drag. For laying on and finishing plaster. Manufactured to the high standards expected by today's trade.



Size	Weight per 10	Order Code KEN-512	Price/1 TB
280mm (11")	4.00kg	-0100K	1511.00

**KENNEDY**  
QUALITY INDUSTRIAL TOOLING**Wooden Skimming Float**

Manufactured from selected timber. Ideal for producing a sandy surface finish when rendering plaster or concrete.



Size (mm)	Weight per 10	Order Code KEN-512	Price/1 TB
290 x 100	190g	-0950K	1037.00

**Adhesive Trowel**

High quality moulded and contoured handle. Large base with two coarse pitched edges and two fine pitched edges. Suitable for use with all tile and carpet adhesives.



Size (mm)	Weight per 10	Order Code KEN-512	Price/1 TB
270 x 110	190g	-0400K	456.00

**KENNEDY**  
PROFESSIONAL**Plasterer's Bath****BM197**

Manufactured from polyethylene, virtually unbreakable. Guaranteed not to rot, rust, crack or distort. Strong, light and easily carried.



Product Number	Capacity	Order Code KEN-512	Price/1 TB
BM197	165ltr	-3000K	2524.00

PRODUCTS ARE ONLY AVAILABLE VIA YOUR DISTRIBUTOR

© 2014

**SENATOR**  
QUALITY TOOLING

**Builders' Trowel**



Ground polished, hardened and tempered high carbon steel alloy blades, tapered to remain rigid right to the tip with high angle handles for improved knuckle clearance and control. Chromed ferrules hold the forged tang firmly.

**Broad Heel Brick Trowel**

11" heel width. London pattern, a smooth rounded end wooden handle with integral tang.



Overall Length	Type	Order Code <b>SEN-512</b>	Price/1 TB
280mm (11")	London	<b>-0060K</b>	<b>420.00</b>

**Pointing Trowel**

Ground polished, hardened and tempered high carbon steel alloy blade, high angle handle. Chromed ferrule holds the forged tang firmly. London pattern, a smooth rounded end wooden handle with integral tang.



Overall Length	Width (mm)	Order Code <b>SEN-512</b>	Price/1 TB
150mm (6")	75	<b>-0020K</b>	<b>198.00</b>

**Gauging Trowel**

London pattern, a smooth rounded end wooden handle with integral tang.



Overall Length	Width (mm)	Order Code <b>SEN-512</b>	Price/1 TB
180mm (7")	90	<b>-0040K</b>	<b>286.00</b>

**KENNEDY**  
PROFESSIONAL

**Professional Brick Trowel**



Manufactured from high carbon tempered and hardened steel with a ground and polished finish, tapered to remain rigid to the tip. Polished and varnished high angle handle, with chromed ferrule, holds the tang in place preventing the blade from twisting.



Overall Length	Width (mm)	Order Code <b>KEN-512</b>	Price/1 TB
280mm (11")	140	<b>-0060K</b>	<b>1114.00</b>

**Professional Pointing Trowel**

Made from high carbon tempered and hardened steel with a ground and polished finish. Tapered to remain rigid to the tip. Polished and varnished high angle handles for greater balance, control and knuckle clearance, with chromed ferrule. Holds the forged steel tang in place preventing the blade from twisting.



Overall Length	Width (mm)	Order Code <b>KEN-512</b>	Price/1 TB
150mm (6")	75	<b>-0020K</b>	<b>664.00</b>

**Gauging Trowel**

London pattern, a smooth rounded end wooden handle with integral tang.

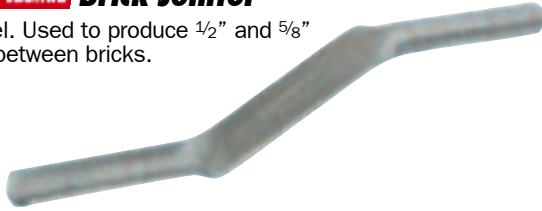


Overall Length	Width (mm)	Order Code <b>KEN-512</b>	Price/1 TB
180mm (7")	90	<b>-0040K</b>	<b>727.00</b>



### Double Ended Brick Jointer

Heavy duty steel. Used to produce 1/2" and 5/8" concave joints between bricks.



Overall Length	Order Code	Price/1 TB
580	<b>-0440K</b>	<b>258.00</b>

### Brick Jointer

Suitable for half round finishing of the joints between bricks. London pattern smooth wooden handle with integral tang.



Size (mm)	Weight per 10	Order Code	Price/1 TB
150 x 12	1.50kg	<b>-0420K</b>	<b>434.00</b>

### Plumb Bobs

Corrosive resistant epoxy coated with brass screw cap. For establishing vertical datum line without the use of a level.



Weight each	Order Code	Price/1 TB
5oz	<b>-2050K</b>	<b>297.00</b>
10oz	<b>-2100K</b>	<b>325.00</b>

### Line Pins

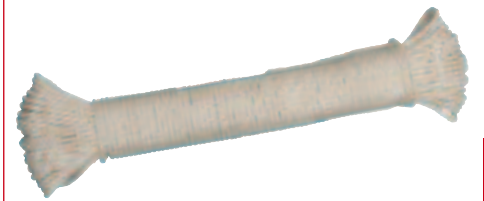
Construction quality, hand, chrome plated line pins. Supplied in pairs. Use with Kennedy brick line to create a horizontal line for consistent bricklaying.



Size	Weight per 10	Order Code	Price/pr TB
150mm (6")	140g	<b>-2160K</b>	<b>207.00</b>

### Brick Line

Construction quality, use with line pins and plumb bobs.



Size	Weight per 10	Order Code	Price/1 TB
18m (60')	740g	<b>-2180K</b>	<b>100.00</b>



### Flexible Buckets

Extremely versatile and virtually indestructible. It can be used for moving soil, garden waste, rubble and various other jobs around a garden or building site.  
460mm diameter.



Size	Weight each	Order Code	Price/1 TB
42ltr	200g	<b>-4880K</b>	<b>474.00</b>



### Builder's Buckets

**Capacity:** 13.5ltr (3gal.)  
**Plastic:** medium 'V' lip.  
**Rubatype:** Large 'V' lip.  
All rubber.



Type	Weight each	Order Code	Price/1 TB
Plastic	0.55kg	<b>-8030K</b>	<b>464.00</b>
Rubatype	2.10kg	<b>-8130K</b>	<b>434.00</b>



### 15ltr Invincible Yellow Builders' Bucket

15ltr (3 gal.) filling scale inside.  
Five year guarantee.



Capacity	Order Code	Price/1 TB
15ltr	<b>-8300K</b>	<b>340.00</b>



### Builder's Flexible Bucket

Extremely versatile and virtually indestructible. It can be used for mixing plaster or cement, moving rubble and various other jobs around a building site.



Size	Order Code	Price/1 TB
<b>Yellow Buckets</b>		
26ltr	<b>-2980K</b>	<b>355.00</b>
40ltr	<b>-3000K</b>	<b>474.00</b>
75ltr	<b>-3040K</b>	<b>1066.00</b>
<b>Blue Buckets</b>		
26ltr	<b>-3080K</b>	<b>355.00</b>
42ltr	<b>-3100K</b>	<b>541.00</b>

