

GROUP 593 TOOL BAGS

SENATOR
QUALITY TOOLING

Canvas Holdall

Manufactured from heavy duty water resistant canvas. Handles wrap underneath the bag for added strength, fitted with a heavy-duty zip.



Length (mm)	Weight each	Order Code	Price/1 TB
460 (18")	250g	-0560K	484.00
610 (24")	335g	-0580K	646.00
760 (30")	360g	-0600K	783.00

PVC Tool Bag

The PVC makes the tool bag puncture resistant, waterproof and rot resistant. PVC holdall riveted leather handle and straps with metal buckles, fibre board base and top.



Length (mm)	Weight each	Order Code	Price/1 TB
300 (12")	230g	-0100K	819.00

KENNEDY
QUALITY TOOLING

Medium Weight Holdalls

Reinforced board base with four riveted plastic feet. Plastic zip fastening, webbing covered rope handles.



Length (mm)	Weight each	Order Code	Price/1 TB
455 (18")	390g	-0110K	979.00
610 (24")	500g	-0120K	1133.00

Heavy Duty PVC Nylon Coated Canvas Holdalls

Reinforced fibre board base with four riveted metal feet and zip fastening. Webbing covered rope handles and welded D-rings at either end.



Length (mm)	Weight each	Order Code	Price/1 TB
455 (8")	670g	-0180K	1288.00
610 (24")	810g	-0240K	1494.00
760 (30")	590g	-0300K	2055.00

Jumbo Tool Bag

Heavy-duty double thickness canvas. Five internal pockets and a fibre board base with six rivetted metal feet. Webbing handles and straps with plastic buckles.



Length (mm)	Weight each	Order Code	Price/1 TB
610 (24")	1.50kg	-0060K	2575.00

Canvas Holdall

Heavy-duty water resistant. Canvas covered rope handles, fully stitched, wrap underneath bag for extra support. Three webbed straps with metal buckles for closing, two of which fully wrap around the bag to give extra support.



Length (mm)	Weight each	Order Code	Price/1 TB
760 (30")	810g	-0080K	953.00

KENNEDY
QUALITY TOOLING

Barn-Type Holdalls

Manufactured from butt split leather with wrap around leather handles. Leather fastening straps with metal buckles. Fully rivetted construction. Reinforced on corners. Black finish.

Holdall with Shoulder Strap

Manufactured from butt split leather with wrap around leather handles. Three leather fastening straps with metal buckles and an adjustable shoulder strap. Fully rivetted construction. Black finish.



Length (mm)	Weight each	Order Code	Price/1 TB
400 (16")	1.40kg	-0620K	6179.00
535 (21")	1.80kg	-0630K	6695.00

Length (mm)	Weight each	Order Code	Price/1 TB
500 (20")	2.30kg	-0640K	13500.00

KENNEDY PROFESSIONAL

Heavy Duty Tool Caddy

600 denier durable fabric. Adjustable shoulder strap. Locking telescopic handle. 26 internal pockets. 12 external pockets. Large internal compartment. Padded handles and strap. Heavy duty zip.



Size (H x W x D)	Weight each	Order Code KEN-593	Price/1 TB
370 x 480 x 260mm	2kg	-0960K	2627.00

Tool Trolley Rucksack

For technicians on the go; it can be pulled behind on wheels **OR** used as a backpack **OR** hand held.

Features include:

Extractable rear straps transform tool trolley into a functional backpack. Two internal double-sided reversible pallets, one with pouches for tools and the other with a soft padded area for computer notebook. Two front pouches for documents, accessories, measuring tape, spares etc. Large wheels for a stable carry-on. Telescopic handle. Fold down wheel cover when being used as a rucksack.



Tools Not Included

Size L x D x H (mm)	Weight each	Order Code KEN-593	Price/1 TB
340 x 150 x 440	4.3kg	-2530K	7725.00

Heavy Duty-Tool Bag

600 denier durable fabric. Adjustable shoulder strap. 11 internal pockets. 17 external pockets. Large internal compartment. Padded handles and strap. Heavy duty zip.



Tools Not Included

Size (H x W x D)	Weight each	Order Code KEN-593	Price/1 TB
250 x 470 x 270mm	1.3kg	-0940K	876.00

Heavy Duty Tool Bag

600 denier durable fabric. Adjustable shoulder strap. 13 external pockets. One large internal compartment. Main compartment can be divided into five pockets using removable divider. Heavy duty water-resistant base for extra strength. Padded handles and strap. Business-card holder and key strap. Heavy duty zip.



Tools Not Included

Size (H x W x D)	Weight each	Order Code KEN-593	Price/1 TB
280 x 340 x 200mm	1.8kg	-0980K	1391.00

Multi-Purpose Tool & Laptop Bag

Ideal for service engineers. Manufactured from a 600 denier fabric that is exceptionally durable and hard wearing. With large internal compartments (one padded for a laptop), pockets and elasticated tool holders it will help to ensure you have the right tool on site when you require it.

Features include:

Padded laptop holder.
Business card holder.
Adjustable shoulder strap.
Padded handles and strap.
Heavy duty zips and rubber feet.



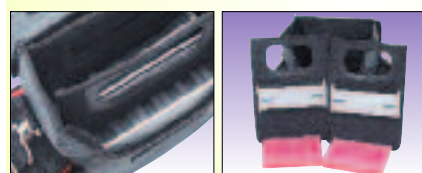
Tools Not Included

- 3x large internal compartments.
- 15x internal pockets.
- 2x external pockets.
- 46x elasticated tool holders.

Size (H x W x D)	Weight each	Order Code KEN-593	Price/1 TB
335 x 530 x 190mm	1.5kg	-5050K	1499.00

Electrician's Tool Bag

Manufactured from heavy duty tear resistant material with reinforced stitched edging. Velcro fastening flap with soft touch carry handle and double webbed shoulder strap fixed with metal release clasps. Supplied with two small organiser cases which are stored in two outer pockets, two removable tool boards (one velcro fastened) are kept inside which have a unique tool storage securing system built-in.



Size L x D x H (mm)	Order Code KEN-593	Price/1 TB
320 x 340 x 125	-0560K	4378.00

GROUP 593 TOOL CASES

KENNEDY Heavy Duty Aluminium Case

High strength, impact resistant case. Reinforced edges and hinges. Rubber padded handle for comfort. Two fitted and hinged tool boards with elasticated tool retaining loops, two expandable document pockets and divided storage compartment. Double locking with two keys.



Size (mm)	Weight each	Order Code	Price/1 TB
480 x 360 x 185	2.60kg	KEN-593 -2650K	21499.00
Spares		Order Code	Price/1 TB
Locks & Keys to suit		-7605K	1127.00
'D' Shape Case Handle to suit		-7610K	1127.00
Upper Tool Board to suit		-7660K	2009.00
Lower Tool Board to suit		-7662K	2009.00

Tools Not Included



Impact Resistant Plastic Case

High strength ribbed double-wall constructed case. Two fitted hinged tool boards with elasticated tool retaining loops, four repositionable dividers in the bottom compartment, expandable document pocket in the lid and two removable small parts trays. Double locking with two keys.



Size (mm)	Weight each	Order Code	Price/1 TB
465 x 350 x 200	2.85kg	KEN-593 -2500K	14317.00
Spares		Order Code	Price/1 TB
Locks & Keys to suit		-7602K	1999.00
'D' Shape Case Handle to suit		-7601K	1127.00
Dividers to suit		-7603K	950.00
Tool Board to suit		-7654K	1900.00

Tools Not Included



KENNEDY Professional Service Case

Hard wearing cordura with nylon reinforced webbing handles. Two tool boards and unique repositionable tool retaining system, ceramic sheath for hot soldering irons and three press stud pockets. Zippable.



Size (mm)	Weight each	Order Code	Price/1 TB
450 x 330 x 80	2.10kg	KEN-593 -2850K	5526.00

Tools Not Included



KENNEDY Aluminium Reinforced Case

Impact resistant case. Two removable tool boards with elasticated tool retaining loops, one with document pocket, divided storage compartment. Double locking with two keys.



Size (mm)	Weight each	Order Code KEN-593	Price/1 TB
445 x 340 x 190	2.85kg	-2550K	12841.00
Spares		Order Code KEN-567	Price/1 TB
'D' Shape Case Handle to suit		-7604K	750.00
Locks & Keys to suit		-7605K	1127.00
Upper Tool Board to suit		-7656K	1803.00
Lower Tool Board to suit		-7658K	1906.00

Impact Resistant Service Case

Ribbed high strength plastic case with aluminium reinforced trim. Two fitted and hinged tool boards with elasticated tool retaining loops. Lockable with two keys. Padded carry handle.



Size (mm)	Weight each	Order Code KEN-593	Price/1 TB
430 x 340 x 160	2.95kg	-2450K	9399.00
Spares		Order Code KEN-567	Price/1 TB
Plastic Catch to suit		-7606K	750.00
Locks with Keys to suit		-7609K	950.00
'D' Shape Case Handle to suit		-7612K	1500.00
Upper Tool Board to suit		-7664K	1500.00
Lower Tool Board to suit		-7666K	1500.00

Polypropylene Moulded Tool Case

The polypropylene moulded case material makes the case extremely resistant against chemical corrosion, shock, high and low temperature. The injection technique ensures constant material thickness, even in the corners. Large and thick aluminium trim, makes the case ideal for daily, heavy duty use. The case can accommodate up to three tool pallets.

Features include:

2x metal lid safety support stays.
2x metal locks with keys.
3x metal hinges for maximum strength.
Ergonomic handle, rubber coated grip.
Address label.



Size L x D x H (mm)	Weight each	Order Code KEN-593	Price/1 TB
430 x 340 x 156	5.5kg	-2510K	11500.00

PRODUCTS ARE ONLY AVAILABLE VIA YOUR DISTRIBUTOR

GROUP 593 TOOL CASES

KENNEDY Heavy Duty Aluminium Tool Case

Manufactured from composite aluminium and rubber resin which is normally used in the automotive industry. Chromed steel hinges with lid support mechanism, two chromed steel locks with keys, a heavy duty plastic handle and four rubber feet. Inside are two secured hinged tool boards, each with 31 elasticated tool loops, an expandable document compartment, two small organisers and a customisable storage compartment with repositional dividers.



Tools Not Included

Size (mm)	Weight each	Order Code	Price/1 TB
466 x 340 x 190	5.5kg	KEN-593 -2740K	18720.00

Spares	Order Code	Price/1 TB
'D' Shape Case Handle to suit	KEN-567 -7601K	1127.00
Locks with Keys to suit	-7607K	1250.00
Upper/Lower Tool Board to suit	-7668K	1900.00

Service Engineer's Flight Case

Manufactured from high impact double walled polyethylene shell, corrosion-resistant and aluminium reinforced. Full length heavy duty piano hinges and trim. Two expandable document pockets, two hinged and fitted tool boards with elasticated tool retaining loops. Shockproof, bottom storage tray with fixed compartments and four small component boxes. The two 38mm wide rubber wheels and retractable telescopic aluminium handle allows the case to be moved when fully loaded with the minimum of effort. Double locking with two keys. Strong enough to be used to transport tools when travelling by aircraft.



Tools Not Included

Size (mm)	Weight each	Order Code	Price/1 TB
485 x 370 x 190	5.7kg	KEN-593 -2700K	19491.00

Spares	Order Code	Price/1 TB
Telescopic Handle & Wheel Set to suit	KEN-567 -7600K	5071.00
'D' Shape Case Handle to suit	-7601K	1127.00
Locks & Keys to suit	-7602K	1999.00
Upper Tool Board to suit	-7650K	2517.00
Lower Tool Board to suit	-7652K	2380.00



KENNEDY High Impact Resistant Tool Case

Manufactured from composite aluminium and rubber resin which is normally used in the automotive industry. Chromed steel hinges with lid support mechanism, two chromed steel locks with keys, a heavy duty plastic handle and four rubber feet. Inside are two secured hinged tool boards, each with 31 elasticated tool loops, an expandable document compartment, two small organisers and a customisable storage compartment with repositional dividers.



Tools Not Included



Size (mm)	Weight each	Order Code KEN-593	Price/1 TB
470 x 390 x 347	6.5kg	-2780K	33058.00

Spares	Order Code KEN-567	Price/1 TB
'D' Shape Case Handle to suit	-7601K	1127.00
Locks with Keys to suit	-7608K	2500.00
Upper Tool Board to suit	-7670K	2500.00
Lower Tool Board to suit	-7672K	2400.00
Telescopic Handle & Wheel Set to suit	-7700K	4999.00

Technical Service Tool Case

Constructed from impact and temperature resistant injection moulded high thickness polypropylene. The case has a large thick aluminium trim with a strength maximising triple metal hinge, it is highly functional with a significant load carrying capability but has a classy appearance to suit the technicians image.

Features include:

Injection moulded high thickness polypropylene. Telescopic handle and heavy duty rubber wheels. Two removable tool trays. Storage area with removable dividers. Two clasps with key locks.



Size L x D x H (mm)	Weight each	Order Code KEN-593	Price/1 TB
465 x 352 x 215	7.00kg	-2520K	10815.00

PRODUCTS ARE ONLY AVAILABLE VIA YOUR DISTRIBUTOR

GROUP 593 TOOL CASES

SENATOR *Service Engineer's Aluminium Tool Case*

Heavy duty case for tool storage, ideal for the mobile service-engineer. Offers the storage of many tools with the professional look of a briefcase. Silver aluminium with reinforced edges and corners. Internal base compartment is fitted with adjustable dividers to offer choice of sizes. Removable rigid tool board stored in the lid with 17 pockets of various sizes.

Supplied with fixed handle and two security locks and keys.



Size (mm)	Weight each	Order Code SEN-593	Price/1 TB
457 x 330 x 150	3.00kg	-4400K	1781.00

Executive Engineer's Aluminium Tool Case



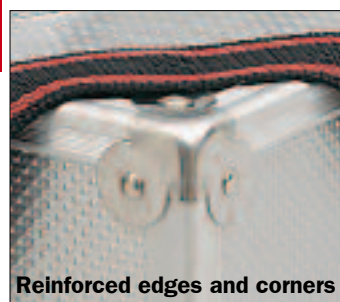
Large, lightweight case for tool storage, ideal for the mobile engineer. Offers the storage and portability of a large amount of tooling with the professional look of a briefcase. Black aluminium case with silver reinforced edges and corners. Internal base compartment is fitted with adjustable dividers to offer choice of sizes. Removable rigid tool board stored in the lid with 17 pockets of various sizes. 1" wide, length adjustable lightweight nylon shoulder strap with rubber shoulder protector for added comfort. Supplied with fixed handle and two security locks and keys.



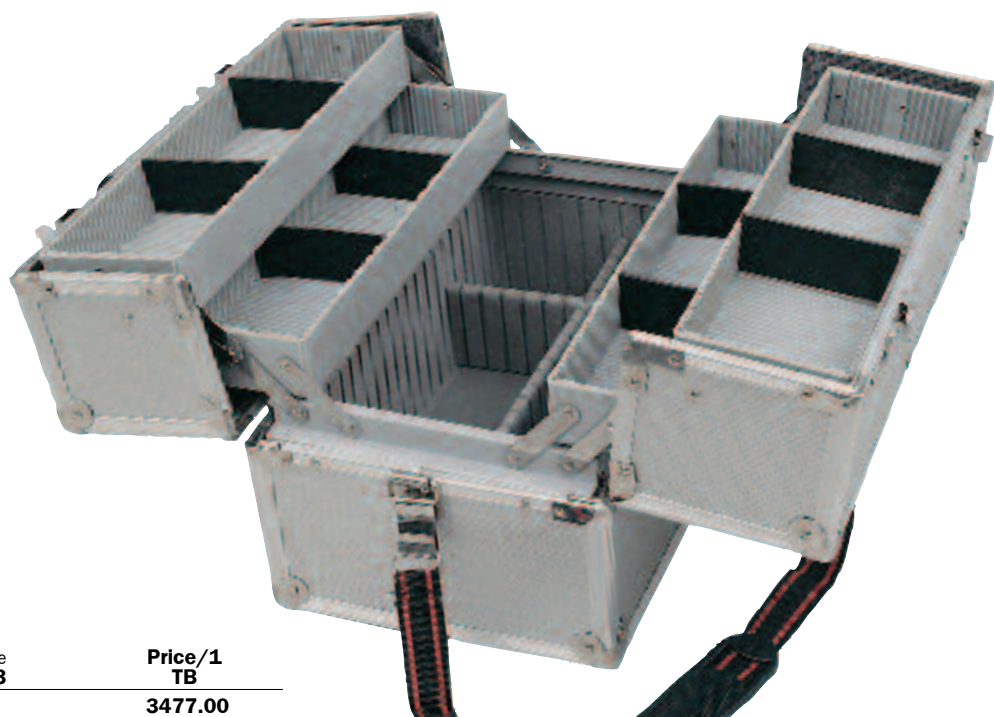
Size (mm)	Weight each	Order Code SEN-593	Price/1 TB
457 x 330 x 150	5.70kg	-4360K	2669.00

Cantilever Aluminium Tool Case

Heavy duty case for tool storage, ideal for the mobile technician. Offers the storage and portability of many tools with the professional look of a briefcase. Silver aluminium with reinforced edges and corners. Concealed cantilever mechanism. Large base compartment with four cantilever trays to make all contents instantly available. Compartment dividers are adjustable to offer choice of sizes. 1" wide, length adjustable lightweight nylon shoulder strap, with rubber shoulder protector for added comfort. Supplied with fixed handle and two security locks and keys.



Size (mm)	Weight each	Order Code SEN-593	Price/1 TB
360 x 220 x 245	3.10kg	-4600K	3477.00





Power Tool Case

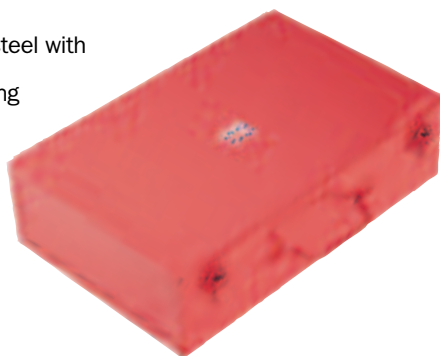
Sturdy plastic case, suitable for a variety of tools, such as angle grinders, honing machines, drills, planes, sanders, etc.



Size (mm)	Order Code KEN-593	Price/1 TB
420 x 260 x 160	-1020K	773.00

Steel Tool Tidy

Made from heavy gauge steel with double folded seams. For storing and transporting portable power tools and other items that require an industrial case for protection.



Size (mm)	Weight each	Order Code KEN-593	Price/1 TB
270 x 115 x 400	1.40kg	-1000K	1288.00

Tool Box with Tote

Manufactured from impact resistant high-density plastic. Internal eight compartment tote tray. Features moulded metric rule on the lid, lid locking clasps and sturdy plastic handle that also locks lid shut when lifting. Padlock hole and piano hinges.



Size (mm)	Order Code KEN-593	Price/1 TB
445 x 240 x 220	-2300K	1004.00

Tool Box With Tote & Organiser

Made from impact resistant high-density plastic. Internal eight compartment tote tray with retractable carry handle and stacking 16-compartment organiser, moulded metric scale on the lid, lid locking clasps and sturdy plastic handle that also locks lid shut when lifting. With lock hasp and piano hinge.



Size (mm)	Order Code KEN-593	Price/1 TB
480 x 240 x 260	-2320K	1494.00

Tool Container with Drawer

Manufactured from impact-resistant polypropylene co-polymer. Internal sliding transparent drawer features removable dividers and locking mechanism to prevent the drawer opening whilst in transit. Internal removable tool pots and pivoting carry handle.



Tools Not Included

Size (mm)	Order Code KEN-593	Price/1 TB
460 x 330 x 215	-1080K	876.00

Tote Tool Organisers

Multi-purpose tote tray organisers are an ideal way to store and transport tools. The tote provides two deep trays for storage, built-in tool holders and a ribbed handle for extra grip.

Small: 392 x 281 x 110mm.

Large: 520 x 340 x 200mm.



NEW

Tools Not Included

Size	Weight each	Order Code KEN-593	Price/1 TB
Small	410g	-2050K	258.00
Large	870g	-2070K	567.00

YAMOTO Heavy Duty Site Tool Boxes

Powder coated. Soft grip carrying handle and lightweight design. The black plastic overrides add to the overall ruggedness helping to prevent damage to the box or items around it. The lid has 'V' section to allow measuring and cutting short lengths of pipe. There is a tote tray for smaller items. Fitted with heavy-duty metal latches designed to stay closed even when in transit.



Width (mm)	Depth (mm)	Height (mm)	Order Code YMT-593	Price/1 TB
470	238	178	-1420K	1494.00
582	298	255	-1440K	2009.00
2 Piece Set - (1 of each above)				-1400K 3039.00

GROUP 593 TOOL BOXES

KENNEDY Multi-Utility Storage Box

A lightweight high capacity injection moulded polypropylene box for tough, heavy duty use. Water-resistant design and integral lifting grips on both sides. The lid features a full length steel pin hinge with 'positive pressure' cam style clamping mechanism that seals the case to create a water-resistant closure. Also features integral trolley suit-case style wheels and a pull-out handle, a robust fold flat carry handle and a slide out clear ID/nameplate holder. Shock-resistant and corrosion-proof. Moulded padlocking hasp and stacking locators.



Tools Not Included



Size (mm)	Order Code	Price/1 TB
780 x 410 x 330mm	KEN-593 -1600K	9785.00

Mobile Tool Box

Sturdy mobile tool box with a large lower storage area for power tools, etc. The tool box has an integral handle slides out for ease of transport, two nested tote trays for smaller tools. The lockable lid has two storage compartments for fixings.



Tools Not Included

Size (mm)	Order Code	Price/1 TB
580 x 370 x 480mm	KEN-593 -2000K	4119.00

4-Drawer Tool Chest

Manufactured from high impact co-polymer polypropylene.



Metric graduated V-groove in the lid securely holds workpiece while being cut.



Tools Not Included

Features four sliding drawers enclosed with a slide clasp front panel to prevent opening whilst in transit. Top carry handle with soft touch grip zone and large locking clasps. Front cover panel and lid have aligning padlock hole for added security.

Size (mm)	Order Code	Price/1 TB
450 x 250 x 325	KEN-593 -1500K	2421.00

Tool Box with Tote & Wheels

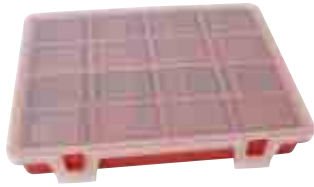
Recessed rigid handle for tilting box onto wheels for easy transportation. Large clasps to lock lid when in transit/storage and padlock hole for security. Recessed carrying handle allows stacking. Five-compartment tote tray also features opaque lids on the two end compartments with moulded snap clasps to prevent accidental opening. **Weight: 3.30kg.**



Size (mm)	Order Code	Price/1 TB
645 x 280 x 300	KEN-593 -2340K	1931.00

KENNEDY 10-Compartment Storage Trays

Made from tough polypropylene. Service cases have 10 equal compartments. Lids have positive catches and are semi-transparent to view their contents.



Overall Length	Overall Width	Overall Depth	Weight each	Order Code	Price/1 TB
240mm	178mm	36mm	0.2kg	KEN-593	258.00
200mm	130mm	45mm	180g	-6040K	283.00

KENNEDY Professional Service Case

Suitable for transporting and storing smaller items. Manufactured from hi-density industrial strength plastic with opaque lid for viewing contents. Slide clasp-locking mechanism to prevent opening while in transit/storage. Lid and base feature two aligning padlock holes to accept padlocks with shackle diameters up to 5.8mm. The lids have three hinges for strength and durability. Eight fixed compartments supplied with dividers to make up to 16 sections.

Dimensions (W x D x H):
380 x 60 x 335mm.



Height (mm)	Width (mm)	Depth (mm)	Order Code	Price/1 TB
380	60	335	KEN-593	773.00

Service Case Organiser

Robust stacking unit for containing four lockable organiser cases, which lift and slide out. The expandable system allows units to be attached on top or side by side. Cases have translucent lid for selecting contents and multi-positional compartment separators. Used for storing up to four service cases.

Dimensions (L x W x H): 425 x 350 x 375mm.

Maximum load: 6kg.

It is recommended that no more than three organisers should be stacked at one time.



SERVICE CASES AVAILABLE SEPARATELY (See above)

Height (mm)	Width (mm)	Depth (mm)	Order Code	Price/1 TB
425	350	375	KEN-593	4712.00

KENNEDY 2-in-1 Rolling Tool Box

Mobile storage solution manufactured from impact resistant plastic, making it ideal for heavy duty use. Features include - soft bi-material handles, padlock eyes, heavy-duty steel catches, side handles for dual lifting, high strength wheels with rubber tyres, integrated footplate to aid tilting, reinforced corners, and lock-in latches to secure the two tool boxes together.



Retractable telescopic handle & removable lid and tote tray



Boxes stack and lock together when transporting

Description	Weight	Order Code	Price/1 TB
2-in-1 Rolling Toolbox	11.3kg	KEN-593	5408.00

Mobile Tool Cabinet

Manufactured from high impact co-polymer polypropylene. Large tilt opening parts bin. Sliding drawers with locking mechanism to prevent the drawer opening whilst in transit. Top carry handle with soft touch grip zone and large locking clasps. Internal four compartment tote tray. Top box and parts bin both feature aligning holes to suit padlocks with shackle diameters of up to 7.4mm. Metric graduated V-groove in the lid securely holds work piece while being cut. Trolley handle is height adjustable. Rear 'H' hooks for storing extension leads and large wheels for easy movement.

Size (W x D x H):
490 x 330 x 720mm.



Size (mm)	Order Code	Price/1 TB
490 x 330 x 720	KEN-593	4815.00

4-Drawer Parts Cabinet

Manufactured from hi-impact co-polymer polypropylene with opaque drawers for viewing contents. Three section top compartment with opaque lid and moulded snap clasps to prevent accidental opening. Each internal sliding transparent drawer features three removable dividers and locking mechanism to prevent the drawer opening whilst in transit. Recessed top carry handle and locating lugs allows stacking of multiple cabinets.

Dimensions (W x D x H):
390 x 200 x 340mm.

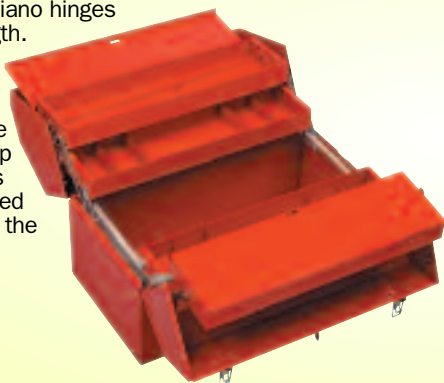


Height (mm)	Width (mm)	Depth (mm)	Order Code	Price/1 TB
390	200	340	KEN-593	1880.00

GROUP 593 TOOL BOXES

KENNEDY PROFESSIONAL 18" Professional Cantilever

Heavy gauge steel with all-welded construction for continuous industrial use. Durable corrosion-resistant two part epoxy powder coat finish. Fully enclosed cantilever mechanism for added security. Quick release lid clasps with padlock hole for security. Two-piece cantilever lids that can be padlocked for additional security (padlock not included). Full width piano hinges provide rigidity and strength. Large base compartment (450 x 260 x 170mm) with four cantilever trays for additional storage. The cantilever action of the top trays makes tray contents instantly available. Supplied with fixed carry handle on the lid.



Width (mm)	Depth (mm)	Height (mm)	Weight each	Order Code KEN-594	Price/1 TB
459	255	333	9.10kg	-0140K	5519.00

Heavy Duty Tool Boxes

Heavy gauge steel, all welded construction. Durable and corrosion resistant two-part epoxy powder paint finish. With quick release lid clasps, padlock hasps and textured carry handles. Full width piano hinges provide rigidity and strength, ensuring smooth operation and additional security. Removable tote tray for smaller tools and components. Can be padlocked for additional security (padlock not included). Supplied with fixed carry handle on the lid.



Width (mm)	Depth (mm)	Height (mm)	Weight each	Order Code KEN-594	Price/1 TB
483	180	180	3.65kg	-0040K	2202.00
508	218	243	6.35kg	-0060K	2913.00

KENNEDY QUALITY INDUSTRIAL TOOLING Industrial Cantilever Tool Boxes

Manufactured from industrial quality steel with all welded construction. Durable corrosion-resistant two-part epoxy powder coat finish. Two piece cantilever lids with padlock hole for additional security. Large base compartment with four partitioned, instant access cantilever trays for additional storage. Full width carry handle also automatically closes trays when lifting.



Overall Length	Overall Width	Overall Depth	Weight each	Order Code KEN-593	Price/1 TB
430mm	205mm	205mm	5.30kg	-1170K	2266.00
560mm	205mm	205mm	6.10kg	-1210K	2677.00

Barn-Type Tool Boxes

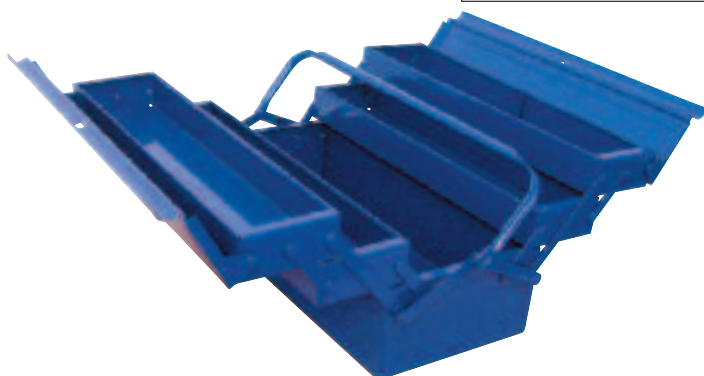
Manufactured from heavy gauge steel of rigid construction for continuous industrial use. Large base compartment for larger items and removable tote tray for smaller and most used items. Hard wearing cellulose paint finish. Two piece lid doors that overlap with padlock hole for added security. Full width piano hinges provide rigidity and strength. Supplied with fixed carry handle on the lid.



Overall Length	Overall Width	Overall Depth	Weight each	Order Code KEN-593	Price/1 TB
355mm	205mm	185mm	3.00kg	-2140K	1391.00
480mm	205mm	185mm	4.40kg	-2190K	1803.00
610mm	205mm	185mm	5.10kg	-2240K	2009.00

SENATOR QUALITY TOOLING Cantilever Tool Boxes

Steel construction with two piece cantilever lids with padlock hole for additional security. Large base compartment with four easy access cantilever trays for additional storage. The full width carry handle automatically closes the trays when lifting.



Size (mm)	Order Code SEN-593	Price/1 TB
430 (17")	-1370K	1666.00
530 (21")	-1410K	1809.00

Barn-Type Tool Box

Steel construction with base compartment for larger items and removable upper tray for smaller, most used items.



Size (mm)	Order Code SEN-593	Price/1 TB
355 (14")	-1540K	1410.00