

GROUP 906 HAND BRUSHES

KENNEDY Twisted Wire Tube Brushes

Twisted wire handle for hand use. For industrial maintenance, agricultural, workshop, machinery etc. For decarbonising and heavy duty cleaning use of tubes, struts, awkward places etc.



Type	Dia. (mm)	Brush Length	Overall Length	Weight	Order Code KEN-906	Price/1 TB
Steel	10	100mm	215mm	600g/50	-1030K	118.00
	15	105mm	215mm	325g/20	-1050K	127.00
	20	100mm	210mm	345g/20	-1060K	137.00
	25	100mm	215mm	275g/10	-1100K	144.00
	30	80mm	210mm	295g/10	-1120K	163.00
Type	Dia. (mm)	Brush Length	Overall Length	Weight	Order Code KEN-906	Price/1 TB
Brass	6	75mm	300mm		-1620K	175.00
	10	75mm	300mm		-1630K	185.00
	12	75mm	300mm		-1640K	196.00
	16	75mm	300mm		-1650K	206.00
	19	75mm	300mm		-1660K	206.00
	25	75mm	300mm		-1700K	221.00

7 Piece Set Contents:

Tube brushes: 1x 10, 15, 20, 25 and 30mm diameter.
Nylon slimline brushes: 1x curved and 1x straight.

Number of Pieces	Weight each	Order Code KEN-906	Price/1 TB
7	200g	-9010K	1018.00

6mm Plain Shank

For use in power tools.



Type	Dia. (mm)	Brush Length	Overall Length	Weight	Order Code KEN-906	Price/1 TB
Steel	15	60mm	100mm	200g/10	-1250K	141.00
	20	60mm	103mm	200g/10	-1260K	147.00
	25	60mm	120mm	230g/10	-1300K	152.00
	30	60mm	115mm	485g/20	-1320K	163.00
	35	60mm	110mm	275g/10	-1330K	173.00
Stainless Steel	15	60mm	100mm	200g/10	-1450K	163.00
	20	60mm	100mm	215g/10	-1460K	164.00
	25	70mm	120mm	460g/20	-1500K	173.00
	30	65mm	120mm	500g/20	-1520K	182.00
	35	60mm	120mm	285g/10	-1530K	220.00

10 Piece Set

Contents	Weight each	Order Code KEN-906	Price/1 TB
1 each of above	550g	-9020K	1553.00

Slimline Brushes

Plain metal handles, with steel wire or nylon bristle filling. Suitable for heavy duty cleaning and decarbonising.



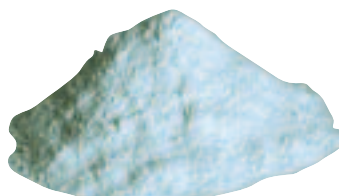
Straight Head

Curved Head

Type	Head Length	Weight per 20	Order Code KEN-906	Price/1 TB
Steel - Straight Head	50mm	1.1kg	-1800K	129.00
Nylon - Straight Head	50mm	1.0kg	-1850K	119.00
Steel - Curved Head	70mm	1.1kg	-1900K	167.00
Nylon - Curved Head	70mm	1.0kg	-1950K	137.00

French Chalk Dusting Powder

Multi-purpose chalk powder. Ideal for dusting down tube repairs prior to refitting tyre. Used by weightlifters. Stops sticking between sheet materials.



Description	Weight each	Order Code KEN-910	Price/1 TB
Powder	500g	-0300K	288.00

French Chalk

Square Sticks - 10 x 100mm

For general layout marking in a wide variety of applications from marking tailor's seams and weld marking on sheet materials in fabrication industries.

Flat Sticks - 5 x 12 x 125mm

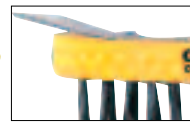
Flat sticks can be used with separate holder (CTL-885-7359D).



Shape	Pack Quantity	Weight each	Order Code KEN-910	Price/Pk TB
Square	50	1.30kg	-0200K	798.00
Flat	144	3.74kg	-1000K	742.00

COTSWOLD Wire Scratch Brushes

A range of plastic handled scratch brushes with cast steel bristles.



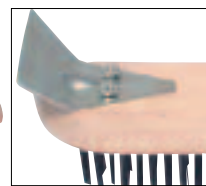
*With scraper.

Number of Rows	Order Code COT-906	Price/1 TB
1	-6100K	41.00
2	-6200K	77.00
3	-6300K	88.00
4	-6400K	98.00
4*	-6450K	110.00
5	-6500K	110.00

KENNEDY Wire Scratch Brushes

Designed for cleaning all rough surfaces on a variety of materials to remove paint, dirt, rust and stubborn deposits. Hardwood stocks.

Bristle type: cast steel.
For general-purpose work.



* With scraper

Number of Rows	Weight each	Order Code KEN-906	Price/1 TB
2	85g	-6200K	68.00
3	115g	-6300K	73.00
4	130g	-6400K	84.00
4*	155g	-6450K	113.00

Stainless Steel

Stainless steel wire scratch brushes are used predominantly in stainless steel welding processes, where the use of an ordinary wire scratch brush would create the risk of contamination of the weld.

Bristle type: stainless steel.



Number of Rows	Weight each	Order Code KEN-906	Price/1 TB
2	140g	-7200K	113.00
3	210g	-7300K	130.00
4	220g	-7400K	147.00

Brass

These brass wire brushes are used in situations where there could be a potential fire or explosion hazard. Brass wire brushes will not cause a spark.

Bristle type: brass.



Number of Rows	Weight each	Order Code KEN-906	Price/1 TB
2	130g	-8200K	147.00
3	220g	-8300K	204.00
4	230g	-8400K	243.00

Identity Discs

Suitable for all identification uses component/batch/labelling, store/user tracking, key identification etc. 30mm outside diameter.



Type	Material	Order Code KEN-937	Price/1 TB
Plain (Single)	Aluminium	-1030K	91.00
	Brass	-2030K	113.00
1 - 100 (Pack of 100)	Aluminium	-1130K	3971.00
	Brass	-2130K	5387.00